

XPi Bent Axis Piston Pumps

Models from 12cc to 130cc,

With suction fitting



XPi

Bent Axis Piston Pumps

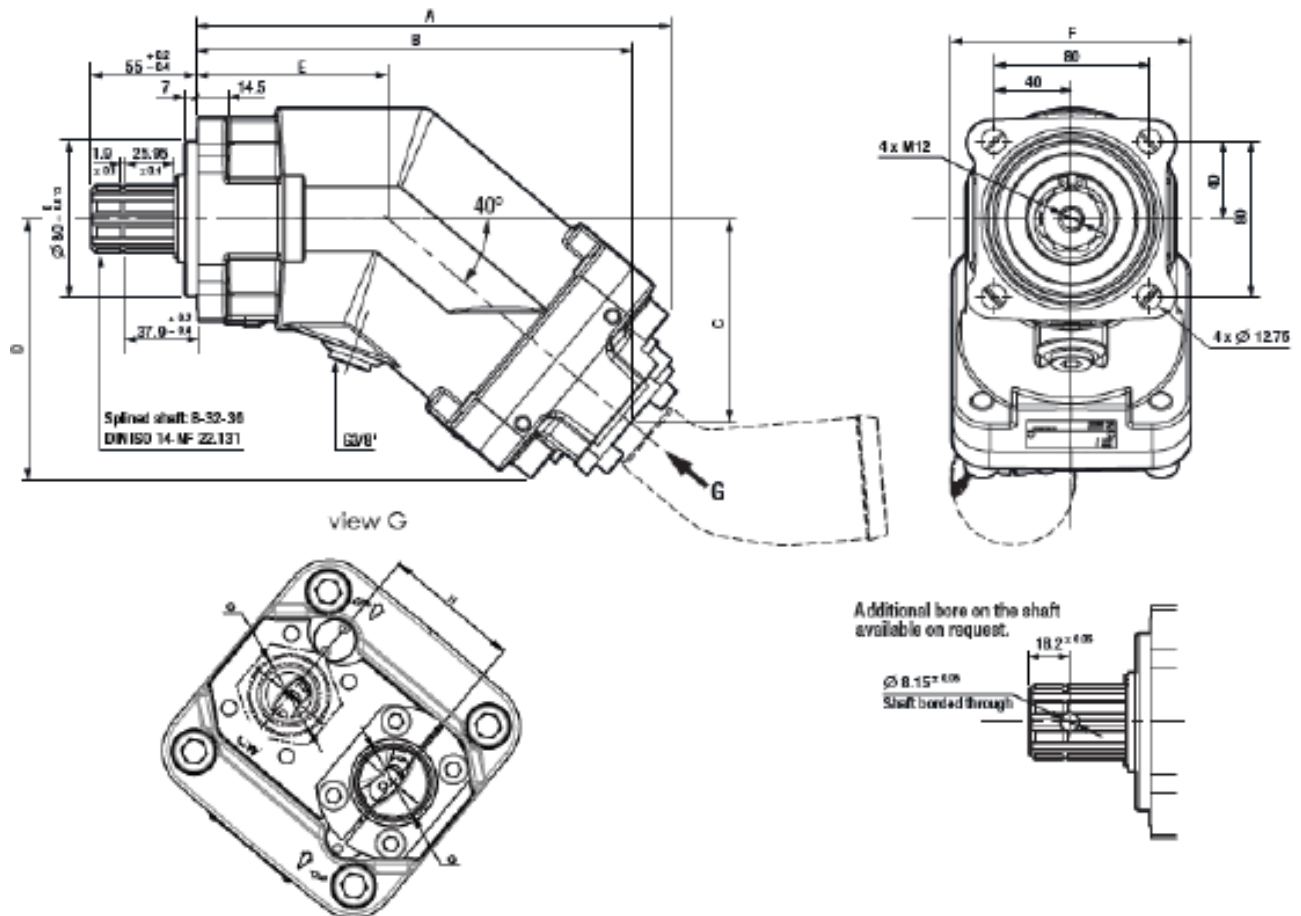
- 10 Models from 12cc to 130cc
- Minimum size envelope
- Bi Rotational
- High rotating speeds
- High output speeds
- 350 Bar continuous working pressure
- 400 Bar peak pressure
- Maximum speed from 1750 to 3150 rpm

Bent Axis Piston Pumps from 12cc to 130cc					
Pump	Displacement cc	Maximum continuous pressure bar	Maximum intermittent pressure bar ≤5 seconds	Maximum Rotating speed at absolute pressure 1 bar rpm	Weight with Suction Fitting Kgs
XPi 10	12	350	400	3150	9.65
XPi 20	18	350	400	2900	9.7
XPi 25	25	350	400	2650	9.75
XPi 35	32	350	400	2700	11.55
XPi 40	41	350	400	2500	11.6
XPi 50	50.3	350	400	2500	11.65
XPi 65	63	350	400	2300	11.7
XPi 80	80.4	350	400	2150	15.3
XPi 110	108.3	350	400	1950	15.4
XPi 130	129.8	350	400	1750	15.8

XPi Bent Axis Piston Pumps

Models from 12cc to 130cc,

With suction fitting



Bent Axis Piston Pumps Dimensions							
Pump	A/H	B	C	D	E	F	G
XPi 10	196.7	177.8	77.1	103.9	85.7	108	3/4"
XPi 20	196.7	177.8	77.1	103.9	85.7	108	3/4"
XPi 25	196.7	177.8	77.1	103.9	85.7	108	3/4"
XPi 35	202.8	184	82.3	109.1	85.7	108	3/4"
XPi 40	202.8	184	82.3	109.1	85.7	108	3/4"
XPi 50	214.4	195.6	92	118.9	85.7	108	3/4"
XPi 65	214.4	195.6	92	118.9	85.7	108	3/4"
XPi 80	241.7	220.9	103.5	133.3	97.4	123	1"
XPi 110	241.7	222.5	104.8	133.3	97.4	123	1"
XPi 130	244	224.8	106.7	135.2	97.4	123	1"

**DUAL DIRECTION OF ROTATION WITHOUT ANY MODIFICATION
SIMPLY SWAP THE INLET FITTING**