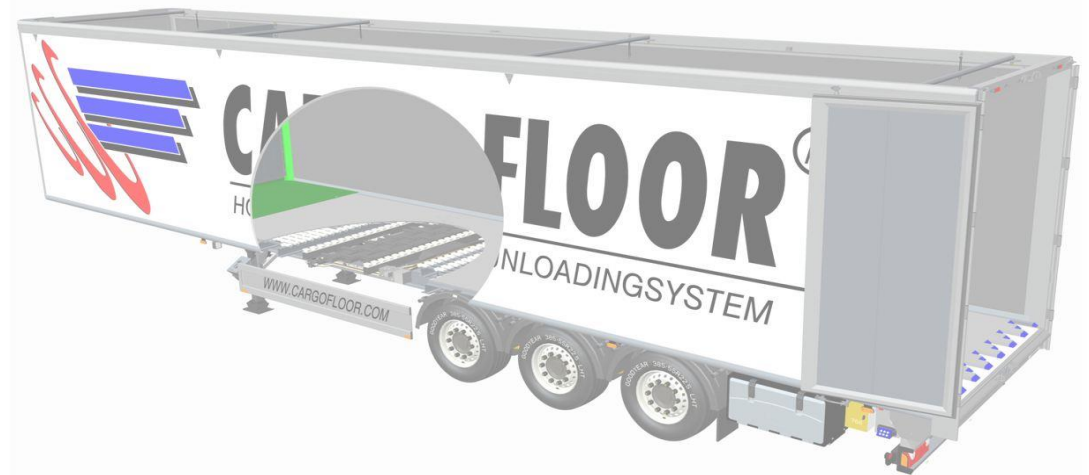


PAGE	SUBJECT
2	STANDARD ALUMINIUM PROFILES 112 MM
3	SPECIAL ALUMINIUM PROFILES 112 MM
4	SIDE & PLASTIC PROFILE & SLAT CONNECTOR
5	ALUMINIUM PROFILES 156,8 MM
6	ALUMINIUM PROFILES LP/LR SERIES AND 160 MM
7	ALUMINIUM PROFILES 97 MM AND REMAINING
8	STEEL PROFILES
9	ENDCAP & ACCESSORIES
10	ANTI WEAR PROTECTION PROFILE
11	SEAL
12	PLASTIC BEARING BLOCK
13	BEARING
14	CONDUCTION BLOCK & BEARING STRIPS
15	CONTROLS, WIRED
16	CONTROLS, REMOTE
17	ROLLER, MANOMETER, TOOLBOX AND PROTECT.SHEET
18	PROTECTIVE COVERS



FOR INFORMATION ONLY !



Description
Art. no.

Alu profile 6/112mm ribbed
20.0360



Alu profile 6/112mm-DS ribbed
21.0549



Alu profile 6/112mm smooth
22.0547



Alu profile 6/112mm-DS smooth
23.0548



Description
Art. no.

Alu profile 8/112 mm ribbed
24.3752



Alu profile 8/112 mm-DS ribbed
29.3753



Alu profile 8/112mm smooth
37.1505



Alu profile 8/112mm-DS smooth
38.1506



Description
Art. no.

Alu profile 10/112mm ribbed
25.0550



Alu profile 10/112mm-DS ribbed
26.0551



Alu profile 10/112mm smooth
27.0552



Alu profile 10/112mm-DS smooth
28.0553

All changes reserved

FOR INFORMATION ONLY !



Description **Alu profile 8-18/112mm HDI**
 Art. no. 30.0695

Description **Alu profile 8-20/112mm HD**
 Art. no. 31.1197

Description **Alu profile 7/112mm XD(X-treme Durable, Hard alloy 7108T66)**
 Art. no. 33.5046

Description **Alu profile 7/112mm-DS XD (X-treme Durable, Hard alloy 7108T66)**
 Art. no. 34.5268



Description **Alu side closing profile L.=220mm SLP seal side**
 Art. no. 5448004

Description **Alu 8/112mm SLP ribbed (possible with SLP-channel Art.no.755.4525)**
 Art. no. 72.2988

Description **Alu side closing profile L.=220mm SLP NOT seal side**
 Art. no. 5448005

Description **Drainage channel for SLP profile**
 Art. no. 755.4525



Description **Alu profile 11/112 (119) mm smooth with overlap**
 Art. no. 67.6315

All changes reserved

FOR INFORMATION ONLY !



Description **Alu 6/56,5mm side profile L/R**
Art. no. 23.4910



Description **Alu 6/61,5mm side profile L/R**
Art. no. 23.5155



Description **Alu 10/56,5mm side profile L/R**
Art. no. 28.4911



Description **Alu 10/61,5mm side profile L/R**
Art. no. 28.5156



Description **Plastic profile 9/112 mm, UV stabilized, color natural white, weight 1,6 kg / mtr**
Art. no. 85.2185



Description **Set CSC 'Slat Connector Strips' 4 x M8 (190x25x15mm)**
Art. no. 5150022.1



Description **CSC "Cargo Slat Connector" drilling jig 2 x 4 holes**
Art. no. 9111015

All changes reserved

FOR INFORMATION ONLY !



77.4915

Description **Alu profile 6/156,8mm smooth**
Art. no. 77.4915



78.4916

Description **Alu profile 6/156,8mm-DS smooth**
Art. no. 78.4916



79.5208

Description **Alu profile 8/20-156,8mm HD**
Art. no. 79.5208



80.5439

Description **Alu profile 8/20-156,8mm-DS HD**
Art. no. 80.5439



775.5109

Description **Alu profile 10/156,8mm smooth**
Art. no. 775.5109



785.5110

Description **Alu profile 10/156,8mm-DS smooth**
Art. no. 785.5110



83.5533

Description **Alu profile 11/33-156,8mm HD SEALLESS**
Art. no. 83.5533



682.5841

Description **Alu 7/156,8mm Protected Seal**
Art. no. 682.5841



81.5440

Description **Alu profile 10/22-156,8mm XHDI**
Art. no. 81.5440



82.5441

Description **Alu profile 10/22-156,8mm-DS XHDI**
Art. no. 82.5441

All changes reserved

FOR INFORMATION ONLY !



89.3497



891.4460



86.6313

Description

**Alu 10/133mm Leak Proof deckslat
HD (Heavy Duty)**

**Alu 7/133mm Leak Proof deckslat
standard**

**Alu. floorprofile "deckslat", LR/LP-
series, 6/160 SEALED**

Art. no.

89.3497

891.4460

86.6313



871.4327



871.5177



5448006

Description

**Alu 8/160mm Leak Proof T subdeck
(Turn-in)**

**Alu 8/160mm Leak Proof T subdeck
(Slide-in) for alu/steel**

**Aluminum endstop T-subdeck LP
floor (350 mm. [13.78"])**

Art. no.

871.4327

871.5177

5448006



76.1602

Description

Alu 8/160mm smooth

Art. no.

76.1602

All changes reserved

FOR INFORMATION ONLY !



40.9150



41.9306



39.4322



43.9440

Description
Art. no.

Alu profile 6/97mm ribbed
40.9150

Alu profile 6/97mm smooth
41.9306

Alu profile 8/97mm smooth
39.4322

Alu profile 10/97mm smooth
43.9440



42.9257



51.7684

Description
Art. no.

Alu profile 10/97mm ribbed
42.9257

Alu profile 5.5/92mm smooth
51.7684



70.6066



692.4214

Description **Aluminium square tube 25x25x2 mm** Art. no. 70.6066
Alu U-profile 25x25mm (for Snap-on) Art. no. 692.4214



50211030.2

**Countersunk screw M10x30
dacromet 10.9 (with locking glue)**
50211030.2



502112030.1

**Screw M12x30 Dacromet 10.9. (with
locking glue)**
502112030.1

All changes reserved

FOR INFORMATION ONLY !



**Steel 4/112 mm L-shape CF floor profile, S500, Magnelis-coating
L=13140 mm
954.S412**

Description

Art. no.



**Solid blue plastic guidance block,
for Cargo Floor steel L-shape floor
profile (60/32, with 2 holes ø7 mm)**

Description

Art. no.

4107037



**Solid blue plastic guidance block for
mounting over tube 25/25 mm for
Cargo Floor steel L-shape floor
profile (98/60/32, with 2 holes ø7
mm)**

4107037.01



**Solid red Anti Lifting guidance
block, for Cargo Floor steel L-shape
floor profile (98x60x32 mm with 2
holes ø7 mm)**

4107039



**Solid red Anti Lifting guidance block
for mounting over tube 25/25 mm for
Cargo Floor steel L-shape floor
profile (98x60x32 mm with 2 holes
ø7 mm)**

4107039.01

All changes reserved

FOR INFORMATION ONLY !



4104002.1

Description **Plastic endcap blue for profile 97 mm.**
Art. no. 4104002.1



5164001.1

Description **Aluminium endcap for profile 97 mm**
Art. no. 5164001.1



4104001.1

Description **Plastic endcap blue for profile 112 mm. [4,41"]**
Art. no. 4104001.1



5164002.1

Description **Aluminium endcap for profile 112 mm.**
Art. no. 5164002.1



4104008.1

Description **Steel endcap 112 mm**
Art. no. 4104008.1



5164004.1

Description **Aluminium endcap for Semi Leak Proof profile 112 mm**
Art. no. 5164004.1



5164010.1

Description **Aluminium endcap for profile 156,8 mm. [6,17"]**
Art. no. 5164010.1



5017002

Description **Monobolt 6.4x23.1, rivet range 10.5-18.4mm**
Art. no. 5017002



5017003

Description **Monobolt 6.4x16.8 [0.25x0.66"], rivet range 4.1-12.1 mm. [0.16-0.48"]**
Art. no. 5017003

All changes reserved

FOR INFORMATION ONLY !



Description **Shaped stainless steel anti wear profile, for bottom side alu profile and endcap 112 mm [4.41"']. Incl. 6 countersunk holes and rivets**

Art. no. 7371059



Description **Protection & anti wear profile stainless steel (for endcap 156,8mm)**

Art. no. 7371065



Description **Aluminum antiwear protection strip 5 mm. incl. holes for welding (112mm)**

Art. no. 7371060



Description **Aluminum antiwear protection strip 5 mm. excl. holes for welding (156,8mm)**

Art. no. 7371066



Description **Aluminum antiwear protection strip 5 mm. excl. holes for welding (156,8mm HD)**

Art. no. 7371067

All changes reserved

FOR INFORMATION ONLY !



Description **Seal for floorprofiles L.55 meter**
Art. no. 4008011



Seal for floorprofiles L.175 meter
[191yd.]
4008003



Seal for floorprofiles L.213 meter
[226yd.]
4008012



Seal for floorprofiles L.293 meter
[320yd.]
4008006



Description **Rivet for seal installation (drill 3.3 mm. [0.13"])**
Art. no. 5017001.1

All changes reserved



Cargo Floor B.V. info@cargofloor.com
Byte 14 NL-7741 MK Coevorden www.cargofloor.com
+31 524 593 900

EXPLODED VIEWS
SEAL

Rev.: 21-10-2019

FOR INFORMATION ONLY !



*
 Description **Plastic bearing strip 7/112 height 35mm. (orange)**
 Art. no. 4103009



*
 Description **Plastic bearing strip 7/112 [4.41"] height 32 mm. [1.26"] (white)**
 Art. no. 4103010



*
 Description **Plastic Bearing strip "Cargo Bulkmover" 3/156,8-H32 Red**
 Art. no. 4107036



Description **Plastic bearing block 3/97 height 32mm. (yellow/lip)**
 Art. no. 4103006



Description **Plastic bearing block 3/97 height 32mm. (yellow/flat)**
 Art. no. 4103007

*Remark: depending on the number of blocks on a bearing strip you will need more strips per cross member.



Description **Monobolt roundhead 6.4 x 20.6**
 Art. no. 50160640206



Description **Self-tapping hexagon head screw with collar 6.3 x 38 zinc plated**
 Art. no. 503363038



Description **Self drilling countersunk head screw with wings 6.3 x 45 zinc plated**
 Art. no. 501963045



Description **Positioning jig for bearing strips**
 Art. no. 9111201

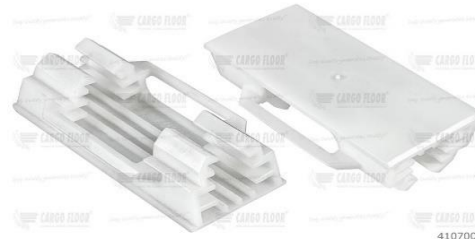
All changes reserved



4107002

Description **Plastic bearing block "Cargo Twister"**

Art. no. 4107002



4107001

Plastic bearing Cargo Floor (25x25mm)

4107001



4107001.2

Plastic bearing Cargo Floor (25x25mm) without feet.

4107001.2



4007004

Plastic bearing 50x25 mm.

4007004



4107005

Description **Plastic bearing Cargo Kick Twister**

Art. no. 4107005



4107030

Bearing (Kick-Twister) gap size 120 mm [4.7"]

4107030



4107023

Cargo 'Snap-on' bearing block

4107023



4107024

Cargo 'Snap-on' bearing block stopper

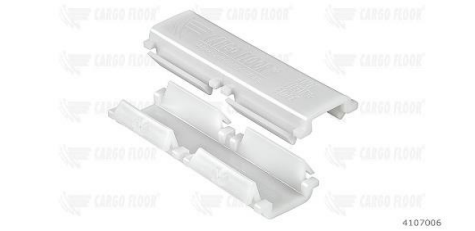
4107024



4107004

Description **Plastic Cargo Support Plate**

Art. no. 4107004



4107006

Plastic Cargo Anti Lifting Block

4107006



4107034

Cargo Floor SPECIAL WIDE bearing 40/25 [1.6/1"] for anti-lifting of floor profile or extra in-between cross members guidance and support

4107034



4107031

Cargo Twister WIDE 40/25 [1.6/1"]

4107031

All changes reserved

FOR INFORMATION ONLY !



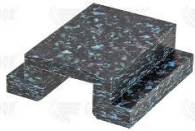
4107009

Description **Bearing H32 pos.point, 2 hole 6,5 mm (red) without vertical lip**
Art. no. 4107009



4107011

Description **Bearing H44 pos. point, 2 hole 6,5 mm (green)**
Art. no. 4107011



4107019

Description **Plastic Anti Lifting, solid execution**
Art. no. 4107019



4107020

Description **Solid plastic Anti Lifting and bearing profile l=200 mm**
Art. no. 4107020

All changes reserved

FOR INFORMATION ONLY !



4105010

Description **Plastic conduction block 60x60x32**
[2.36x2.36x1.26"], for pipe Ø=20 mm
[0.79"]
 Art. no. 4105010



4105009.1

Description **Plastic conduction block 60x60x32**
[2.36x2.36x1.26"], for pipe Ø=25 mm
[1"]
 Art. no. 4105009.1



4105014

Description **Plastic conduction block 132x60x32**
[5.20x2.36x1.26"], for pipe Ø=20 mm
[0.79"]
 Art. no. 4105014



4105015

Description **Plastic conduction block 132x60x32**
[5.20x2.36x1.26"], for pipe Ø=25 mm
[1"]
 Art. no. 4105015



4101004

Description **Plastic bearing strip 2500 x 75 x 5**
mm. [98"x3"x0,2"]
 Art. no. 4101004



4101007

Description **Plastic wear plate for rear portal**
trailer, dim. 2.500x250x5mm
[98"x10"x0.2"]
 Art. no. 4101007



4101002.01

Description **Solid plastic bearing strip 1.990 x 60**
x 7 mm with 5 countersunk holes Ø
6,5 mm, excl. blind rivets
 Art. no. 4101002

All changes reserved



6103019.01



6103021.02



6104009



6103036

Description **Control box Cargo Floor CF7+CF8 "E" excl. mounting bracket**
 Art. no. 6103019.01

Description **Control box Cargo Floor CF7 "E" excl. mounting bracket**
 Art. no. 6103021.02

Description **Remote control CF8 "E" (with cable and plug)**
 Art. no. 6104009

Description **CF7 switch - version which is integrated in dome plate with emergency stop**
 Art. no. 6103036



6103026.01



6103028.01



6104010

Description **Control box Cargo Floor CF3+CF4 "B" excl. mounting bracket**
 Art. no. 6103026.01

Description **Control box Cargo Floor CF3 "B" excl. mounting bracket**
 Art. no. 6103028.01

Description **Remote control CF4 "B" (with cable and plug)**
 Art. no. 6104010



6415107



5154014.01

Description **Control box Cargo Floor excl. electrical components/mounting bracket**
 Art. no. 6415107

Description **Mounting bracket (Control box/Toolbox) incl. fastening materials**
 Art. no. 5154014.01

All changes reserved



6104008

Description

Cargo Floor wireless remote control set 3-functions, consisting of: APP-receiver (incl. 4P Hirschman plug and CAN bus) and (6104025) wireless remote control (CF TX, incl. UBS charger 100-240VAC + car charger + charger cable)

Art. no.

6104008



6104025

Cargo Floor wireless remote control (CF TX) 3-functions (incl. UBS charger 100-240VAC + car charger + charger cable)

6104025



6104023

Cargo Floor APP-receiver (3-functions). Incl. 4P Hirschmann plug and CAN bus

6104023



I/B

6104011

Description

Cargo Floor wireless remote control set 10-functions, consisting of: APP-receiver (incl. 4P Hirschman plug and CAN bus), APP-receiver (additional 7-functions incl. CAN-bus) and wireless remote control (CF TX, incl. UBS charger 100-240VAC + car charger + charger cable)

Art. no.

6104011



6104029

Cargo Floor wireless remote control (CF TX) 10-functions (incl. UBS charger 100-240VAC + car charger + charger cable + keycord)

6104029



6104023.2

Cargo Floor remote control - app receiver (additional 7-functions) incl. CAN-bus

6104023.2

FOR INFORMATION ONLY !



5165003

Description **Set a 2 pcs. Cargo Roller, HD, 6 wheels with bi-directional cleaning device**
Art. no. 5165003



4199006

Description **Floor mat „ Heavy Duty“ for moving headboard, universal, Dimensions: 2.460 x 1.650 mm. Weight 15.75 kg.**
Art. no. 4199006



Description **Plastic side strip for sealing side of moving headboard, dim. 2.500x160 mm.**
Art. no. 4199007



7199002

Description **Manometer set Cargo Floor 0-250 bar [3626 PSI] (connection at the underside)**
Art. no. 7199002



7199003.01

Description **Manometer Cargo Floor 0-250 bar (connection directly to the control valve)**
Art. no. 7199003.01



6104024.01

Description **Oil temperature safety switch; protection against overheating. For Cargo Floor control valve E/B**
Art. no. 6104024.01



6415106

Description **Toolbox Cargo Floor excl. tools/ mounting bracket**
Art. no. 6415106



6415105

Description **Tools and parts "first aid" for toolbox Cargo Floor**
Art. no. 6415105



5154014.01

Description **Mounting bracket (Control box/Toolbox) incl. fastening materials**
Art. no. 5154014.01



9013101

Description **Pneumatic operation set for protection sheet**
Art. no. 9013101



9013104

Description **Mechanism for protection sheet for Cargo Floor (manual operation)**
Art. no. 9013104



9013102

Description **Floor mat „ Heavy Duty“ for moving headboard, universal, Dimensions: 2.460 x 1.650 mm. Weight 15.75 kg.**
Art. no. 4199006

All changes reserved

FOR INFORMATION ONLY !



Description **Protective cover cylinder (rod side)**

Art. no. 7371052



Protective cover cylinder (bottom side)

7371053



Protective cover control valve (top side)

7371054



Set protective covers, consisting of covers cylinder (rod and bottom side) and control valve (top side)

7371063

All changes reserved