

Harsh Limited
The Industrial Estate, Full Sutton, York, YO41 1HS
Tel: 01759 372100 Fax: 01759 371414
email: harsh@harshuk.com

SLIDE 'N' COVER - ELECTRIC PARTS BOOKLET

Please consult Harsh if any issues arise as parts manuals are subject to change without prior notice.

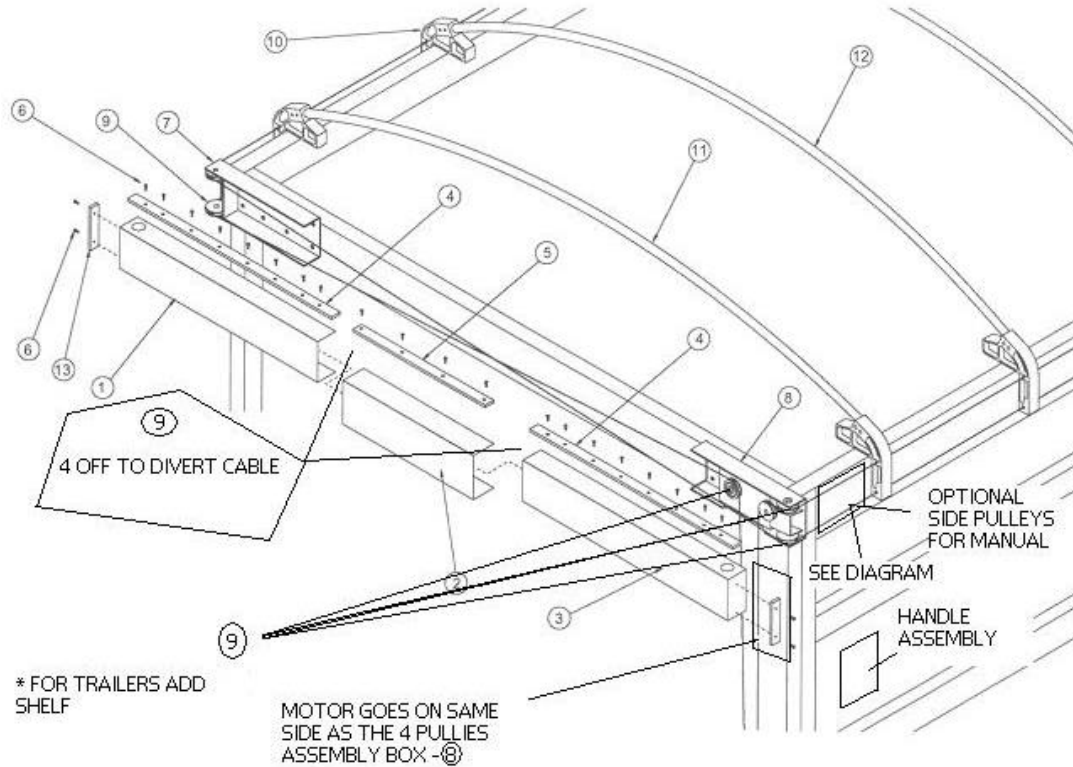


FM 13737

HARSH[®]
www.harshuk.com

Registered office as above. Registered in England No. 2168135. VAT Reg. No. 475 4892 00

Front Cover & Pulley Box Assembly



ITEM	PART#	DESCRIPTION	HARSH STOCK CODE	QTY
1	502-0186	Aluminium Front Cover (Right)	YCABLECOVER-FR/101	1
2	502-0187	Aluminium Front Cover (Centre)		1
3	502-0185	Aluminium Front Cover (Left)		1
4	502-0190	Aluminium Mounting Strip 44" Lg	YSTRIP-54"	2
5	502-0189	Aluminium Mounting Strip 18" Lg		
6	506-9929	#12-14 X 1" Lg. Self-Tapping Tek Screw	YSCREW#12X1"	24
7	502-0107	Pulley Box Assembly-2pullies	YPULLEYHOUSING * ALSO JUST DO HOUSING	1
8	502-0105	Pulley Box Assembly-4pullies (Handed)	YPULLEYBOX -(L/H OR R/H) * ALSO JUST DO HOUSING	1
9	502-0148	2.5" Pulley W/Bearing	YPULLEYFRONT2.5	6
10	502-0301	Super Slider For Diamond Rail	YSUPERSLIDER-12	***
11	502-0320	6" Super Slider Bow	YBOWSNC-6/XXX (101.5 LONGEST)	***
12	502-0319	12" Super Slider Bow	YBOWSNC-12/XXX (101.5 LONGEST)	***
13	502-0112	Aluminum Mounting Strip	YSTRIP-6	2
Rear Bows (Not Shown) – Different Because Of Attaching Rear Flap, Extra Holes In Bow				
	502-0329	6" Super Slider Rear Bow	YBOWSNC-6/XXXREAR	1

Harsh Limited
The Industrial Estate, Full Sutton, York, YO41 1HS
Tel: 01759 372100 Fax: 01759 371414
email: harsh@harshuk.com

			(101.5 LONGEST)	
	502-0330	12" Super Slider Rear Bow	YBOWSNC-12/XXXREAR (101.5 LONGEST)	1
	502-9923	Rear Bow Wind Deflector	YBOWDEFLECTOR	1

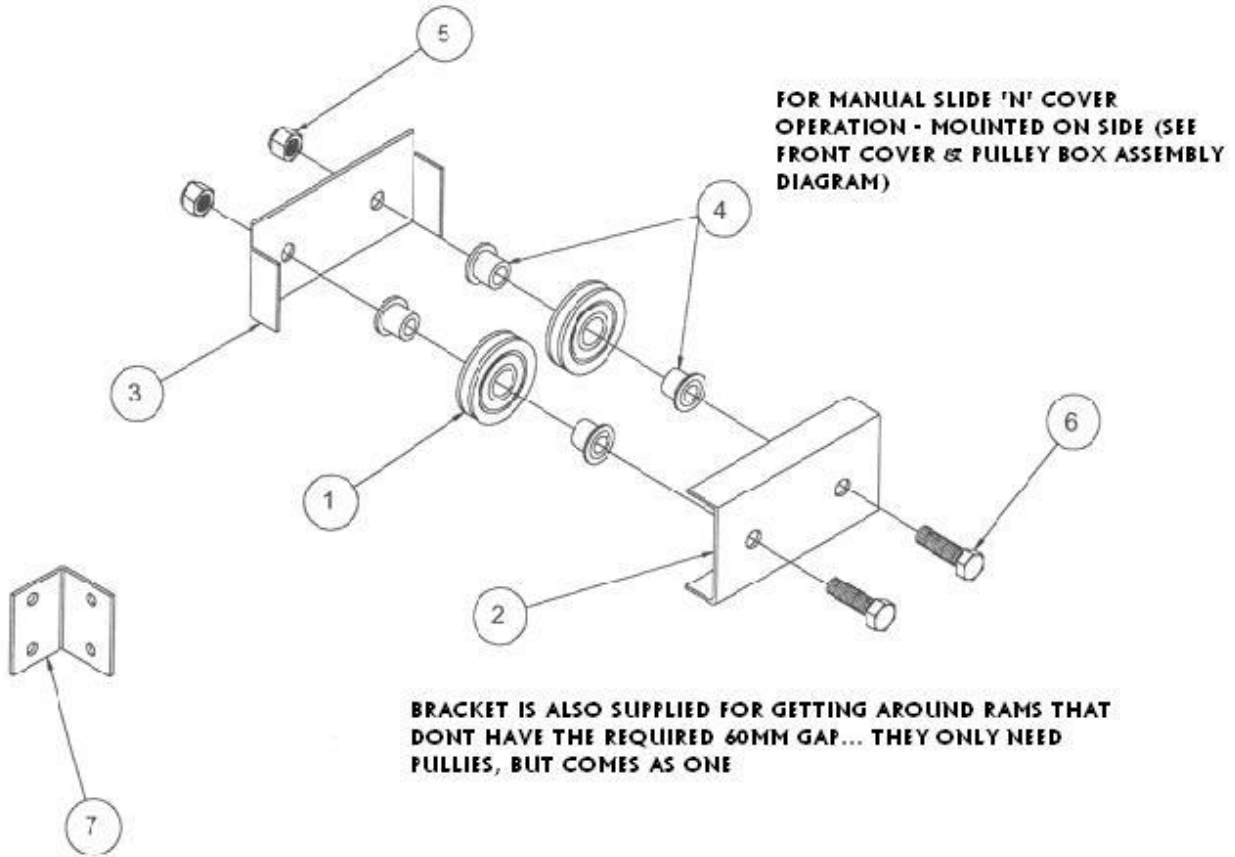


FM 13737

HARSH[®]
www.harshuk.com

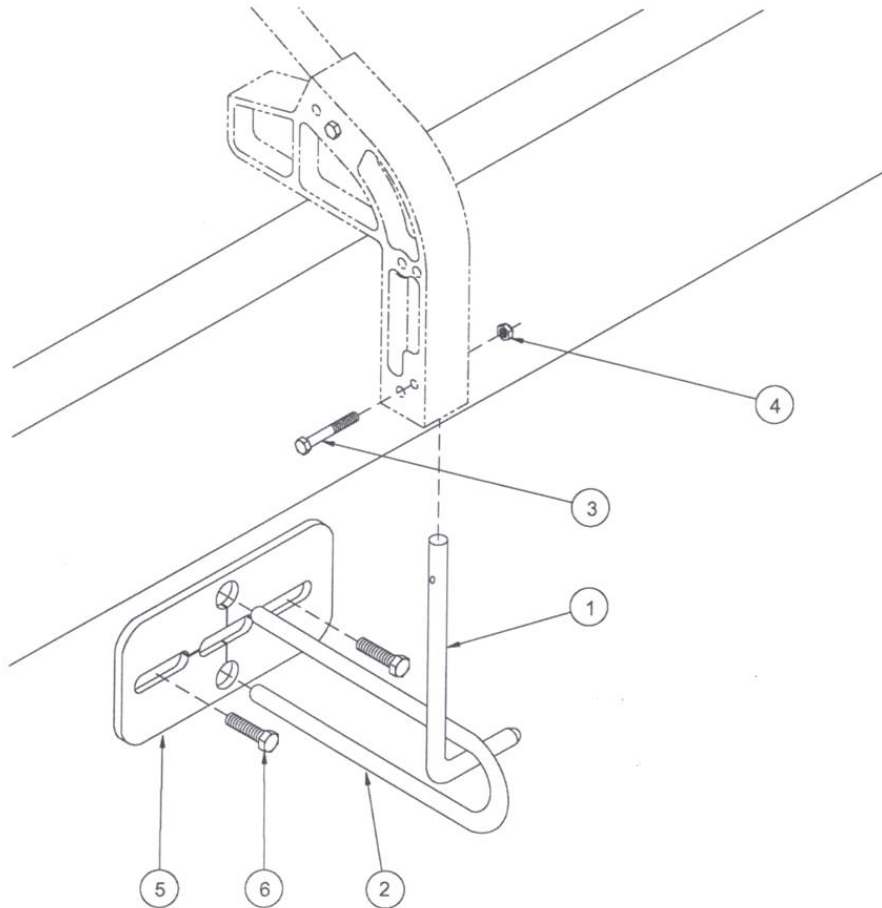
Registered office as above. Registered in England No. 2168135. VAT Reg. No. 475 4892 00

Optional Side Pulley Box Assembly



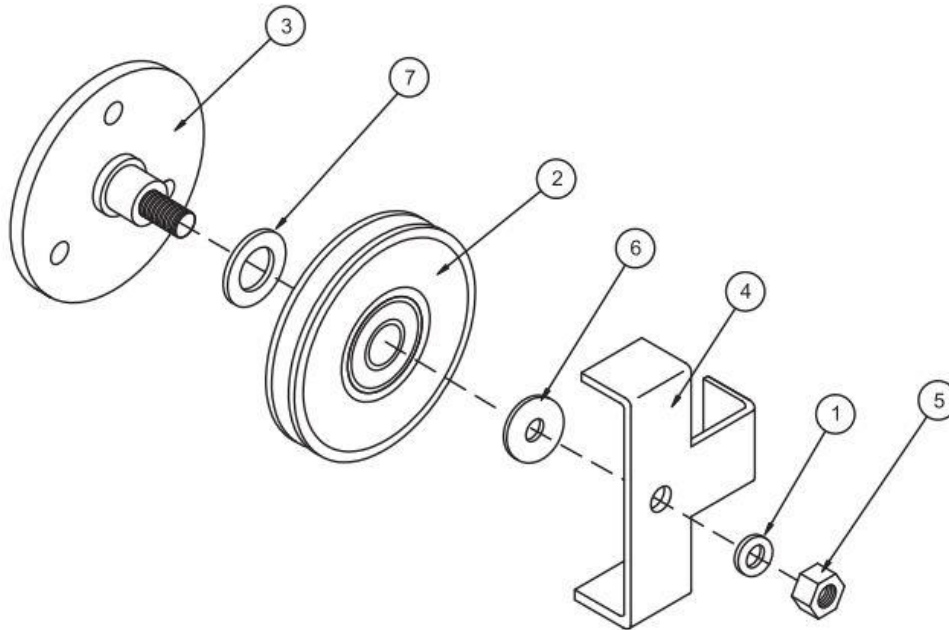
ITEM	PART#	DESCRIPTION	STOCK CODE	QTY
1	502-0148	2.5" Pulley W/Bearing	YPULLEYFRONT2.5	2
2	502-0156	Side Pulley Mount	SPECIALORDER	1
3	502-0157	Side Pulley Cover	SPECIALORDER	1
4	502-0159	BUSHING, PULLEY 20mm (ALUMIUM)	YPULLEYBUSH	4
5	504-5004	1/2 " - 13 Nyloc Nut	XNUT1/2	2
6	503-5014	1/2 " - 13 X 1 3/4"Lg. HHCS BOLT	XBOLT1/2X13/4	2
7	502-0451	Slider Bracket	YANGLE-STOP	2

Hold Down Assembly



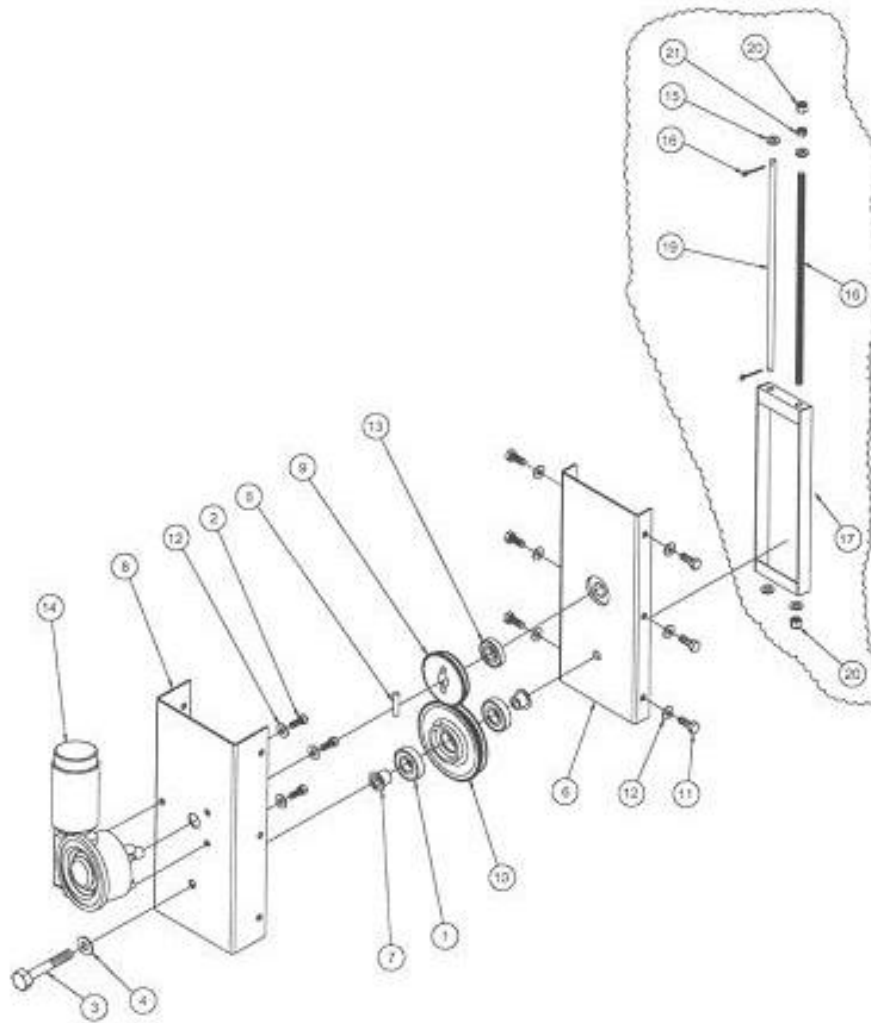
ITEM	PART#	DESCRIPTION	STOCK CODE	QTY
1	502-0425	Truck Hold Down -4"	YHOLD-SML	
	502-0426	Truck Hold Down -6"	YHOLD-MED	
	502-0427	Truck Hold Down -7" 1/2"	YHOLD-LRG	
	502-0428	Truck Hold Down -9"	SPECIAL ORDER	
2+5	502-0415	Truck Body Hold Down	XAUTOCLIPBKT	***
3	503-2511	1/4"-20x 1 3/4"Lg. Hhcs Bolt	YBOLT1/4	1
4	504-2506	1/4"-20 Nyloc Nut (Thin)	YNUT1/4	1
5	502-0419	Optional Hold Down Baseplate (For Aluminum Bodys)	SEE 2	***
6	506-3703	3/8" X 1"Lg. Self Tapping Screw (Optional)	YSCREW3/8X11/4	2

Rear Pulley Assembly



ITEM	PART#	DESCRIPTION	STOCK CODE	QTY
1	505-5001	1/2" AN FLAT WASHER	WASH1/2"	2
2	502-0208	4.5" STANDARD PULLEY W/BEARING	YPULLEYREAR-ONLY	2
3	502-0210	REAR PULLEY ASSEMBLY	SEE COMPLETE UNIT	2
4	502-0213	REAR PULLEY MOUNT COVER	YPULLEYGUARD	2
5	504-5004	1/2"-13 NYLOC NUT	XNUT1/2LOCK	2
6	505-5004	1/2" FLAT WASHER USS	WASH1/2"	2
7	505-9905	20mm FLAT WASHER	WM20FLAT	2

Gear Reduction Rear Drive Assembly



ITEM	PART#	DESCRIPTION	STOCK CODE	QTY
1	502-0540	BEARING 6204-2RS 20x47x14	YHANDLE-BEARING	2
2	503-3103	5/16"-18 X 3/4"Lg. Hhcs Bolt	XBOLT5/16X3/4"	3
3	503-5007	1/2"-13 X 2 1/4"Lg. Hhcs Bolt	XBOLT1/2X21/4"	1
4	505-5003	1/2" Lock Washer	WASH1/2"	1
5	517-0326	.312" X 1.5" Lg. Dowel Pin	YMOTORPULLEY-PIN	1
6	502-0543	Adjustable Motor Cover	YMOTORDRIVEG-HOUSING	1
7	502-0546	1 1/8" Pulley Bushing		2
8	502-0561	Gear Drive Motor Mount	YMOTORDRIVEG-HOUSING	1
9	502-0562	48 Tooth Geared Pulley	YMOTORPULLEY-G48	1
10	502-0563	74 Tooth Geared Pulley	YMOTORPULLEY-G74	1
11	503-3101	5/16"-18 X 1/2"Lg. Hhcs Bolt	XBOLT5/16X3/4"	6
12	505-3102	5/16" Lock Washer	XWASH5/16SPRING	9
13	502-0566	.75" ID X 1.65" OD BEARING		1

YMOTORDRIVEKIT-G W/O 14

Harsh Limited
 The Industrial Estate, Full Sutton, York, YO41 1HS
 Tel: 01759 372100 Fax: 01759 371414
 email: harsh@harshuk.com

14	517-0906	24v Dc Electric Motor	XMOTORDDRIVEORIDE * SEE BREAKDOWN STANDARD MOTOR DRIVE	1
	514-0201	6 Ga. Electrical Wire	XWIRETWINBLACK	100'
	514-0505	Quick Disconnect Term 50 Amp	NON UK	2
	514-0103	Electric Switch Assembly	XSOLENOID-PACK	1
15	505-5001	1/2" An Flat Washer	WASH1/2"	4
16	506-1201	1/8" X 1" Lg. Cotter Pin	SEE ASSEMBLY	2
17	502-0510	Crank Base Plate Assy	SEE ASSEMBLY	1
18	502-0516	Crank Adj. Shaft 1/2"-13 X 14"Lg. Threaded	YADJSHAFT	1
19	502-0530	1/2" GUIDE SHAFT 13 1/4"Lg.	YADJSHAFT-PLAIN	1
20	504-5004	1/2"-13 Nyloc Nut	XNUT1/2LOCK	2
21	504-5005	1/2"-13 Hex Nut	XNUT1/2	1

YHANDLEBASEM
 OUNT
 (502-0509)



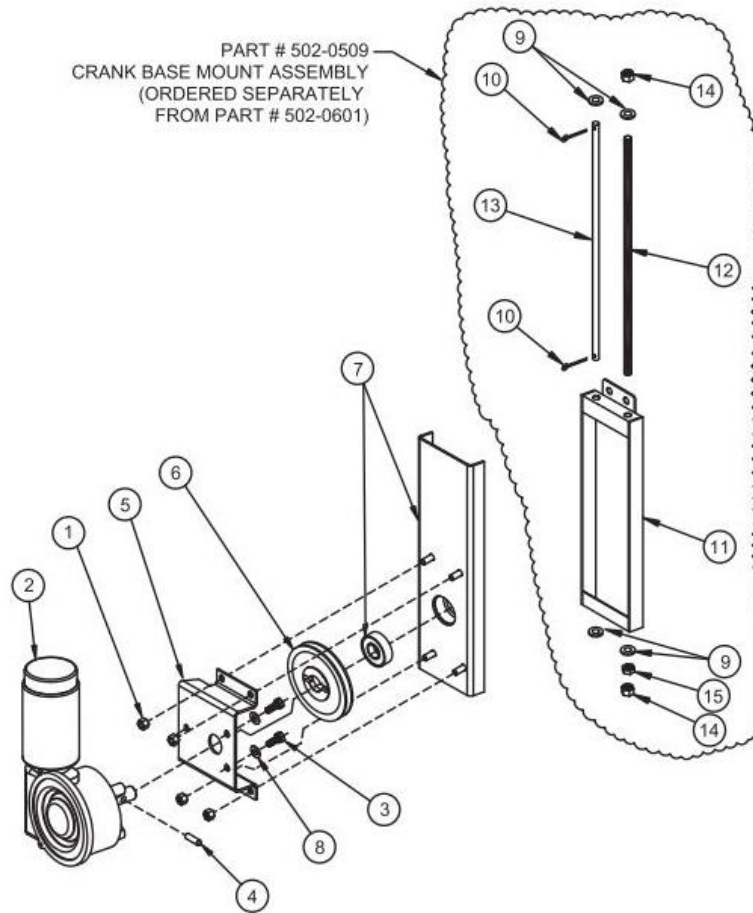
FM 13737

HARSH[®]

www.harshuk.com

Registered office as above. Registered in England No. 2168135. VAT Reg. No. 475 4892 00

Pulley Rear Drive Assembly



ITEM	PART#	DESCRIPTION	STOCK CODE		QTY	
1	504-3103	5/16"-18 Nyloc Nut	XNUT5/16LOCK	YMOTORDRIVEKIT	4	
2	517-0906	24v Dc Electric Motor	XMOTORDDRIVEO RIDE	2A	XMOTOR-D- ENDBELL	1
				2B	XMOTORDIRECT ONLY	
				2C	XMOTORDDG/B OX	
3	503-3103	5/16"-18 X 3/4"Lg HHCS BOLT	XBOLT5/16X3/4"		3	
4	517-0326	.312 X 1.5"Lg. Dowel Pin	YMOTORPULLEY-PIN		1	
5	502-0620	Super Winch Motor Bracket	YMOTORBRACKET		1	
6	502-0621	4.5" Super Winch "V" Pulley	YMOTORPULLEY		1	
7	502-0622	Sw Motor Drive Cover Assy.	YMOTORDRIVEKIT		1	
8	505-3102	5/16" Lock Washer	XWASH5/16SPRING		3	
9	502-0566	.75" Id. X 1.65" Od. Bearing			1	
	514-0201	6 Ga. Electrical Wire	XWIRETWINBLACK		100'	
	514-0505	Quick Disconnect Term 50 Amp	NON UK		2	

Harsh Limited
 The Industrial Estate, Full Sutton, York, YO41 1HS
 Tel: 01759 372100 Fax: 01759 371414
 email: harsh@harshuk.com

	514-0103	Elect. Switch Assmbly	XSOLENOID-PACK		1
10	505-5001	1/2" An Flat Washer	WASH1/2"	YHANDLEBASEM OUNT (502-0509)	4
11	506-1201	1/8" X 1" COTTOR PIN	SEE ASSEMBLY		2
12	502-0510	Crank Base Plate Assembly	SEE ASSEMBLY		1
13	502-0516	Crank Adj. Shaft, 1/2"-13 X 14"Lg. Treaded	YADJSHAFT		1
14	502-0530	1/2" GUIDE SHAFT 13 1/4"Lg.	YADJSHAFT-PLAIN		1
15	504-5004	1/2"-13 Nyloc Nut	XNUT1/2LOCK		2
16	504-5005	1/2"-13 Hex Nut	XNUT1/2		1



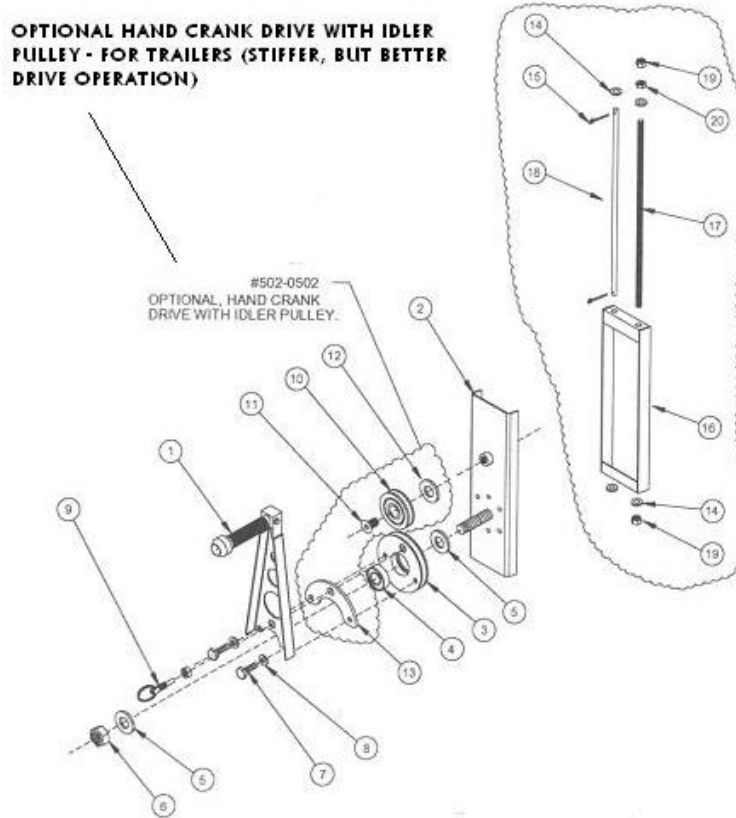
FM 13737

HARSH[®]

www.harshuk.com

Registered office as above. Registered in England No. 2168135. VAT Reg. No. 475 4892 00

Hand Crank Drive Cover Assembly



ITEM	PART#	DESCRIPTION	STOCK CODE	QTY	ITEM
1	502-0508	CRANK ARM ASSEMBLY	YHANDLE-ONLY	YHANDLE-MAN	1
2	502-0512	HAND CRANK DRIVE COVER ASSY.	YHANDLE-COVERPLATE		1
3	502-0534	4.5" DRIVE PULLEY "V" GROOVE	YHANDLE-PULLEY		1
4	502-0540	BEARING 6204-2RS 20x47x14	YHANDLE-BEARING		1
5	505-9905	20mm FLAT WASHER	WM20FLAT		2
6	504-9902	20mm NYLOC NUT	NM20LOCK		1
7	503-3103	5/16"-18 x 3/4"lg. HHCS BOLT	XBOLT5/16X3/4"		2
8	505-3102	5/16" LOCK WASHER	XWASH5/16LOCK		2
9	502-0539	SPRING LOCK PLUNGER	YHANDLE-PIN		1
10	502-0148	2.5" PULLEY W/BEARING	YPULLEYFRONT2.5"		WITH IDLER PULLEY #502-0502
11	506-5003	1/2"-13 x 1"lg. FLAT HEAD SOCKET CAP	SCREW1/2CAP	1	
12	505-9905	20mm FLAT WASHER	WM20FLAT	1	
13	502-0564	PULLEY HANDLE SPACER	YHANDLE-SPACER		1

Harsh Limited
 The Industrial Estate, Full Sutton, York, YO41 1HS
 Tel: 01759 372100 Fax: 01759 371414
 email: harsh@harshuk.com

14	505-5001	1/2" AN FLAT WASHER	WASH1/2"	YHANDLEBASEM OUNT (502-0509)	4
15	506-1201	1/8" x 1" lg. COTTER PIN	SEE ASSEMBLY		2
16	502-0510	CRANK BASE PLATE ASSY	SEE ASSEMBLY		1
17	502-0516	CRANK ADJ. SHAFT 1/2"-13 x 14"lg. THREADED	YADJSHAFT		1
18	502-0530	1/2" GUIDE SHAFT 13 1/4"lg.	YADJSHAFT-PLAIN		1
19	504-5004	1/2"-13 NYLOC NUT	XNUT1/2LOCK		2
20	504-5005	1/2"-13 HEX NUT	XNUT1/2	1	



FM 13737

HARSH[®]
www.harshuk.com

Registered office as above. Registered in England No. 2168135. VAT Reg. No. 475 4892 00