

Harsh Limited
The Industrial Estate, Full Sutton, York, YO41 1HS
Tel: 01759 372100 Fax: 01759 371414
email: harsh@harshuk.com

HARSH Hookloader

Spare Parts & Maintenance Manual

Edition 2017



FM 13737

HARSH[®]
www.harshuk.com

Registered office as above. Registered in England No. 2168135. VAT Reg. No. 475 4892 00

Harsh Limited
The Industrial Estate, Full Sutton, York, YO41 1HS
Tel: 01759 372100 Fax: 01759 371414
email: harsh@harshuk.com

SPARE PARTS



service



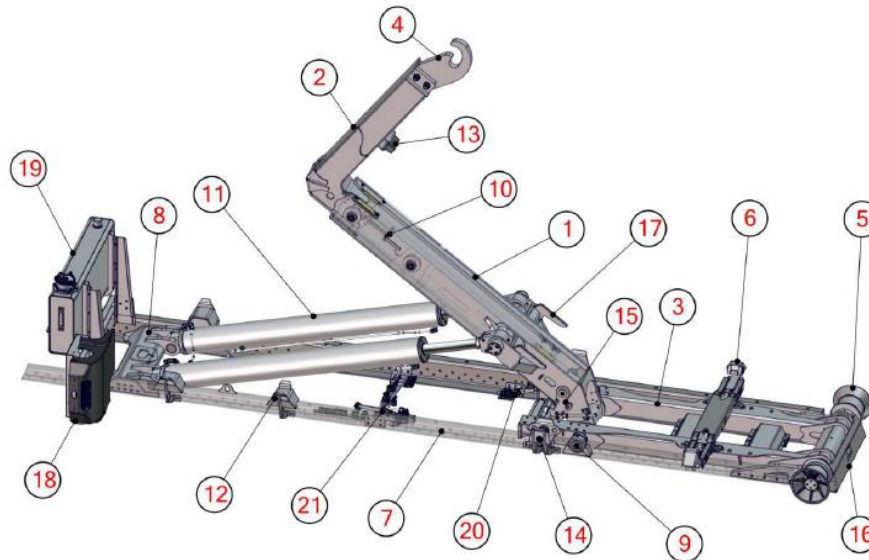
FM 13737

HARSH[®]
www.harshuk.com

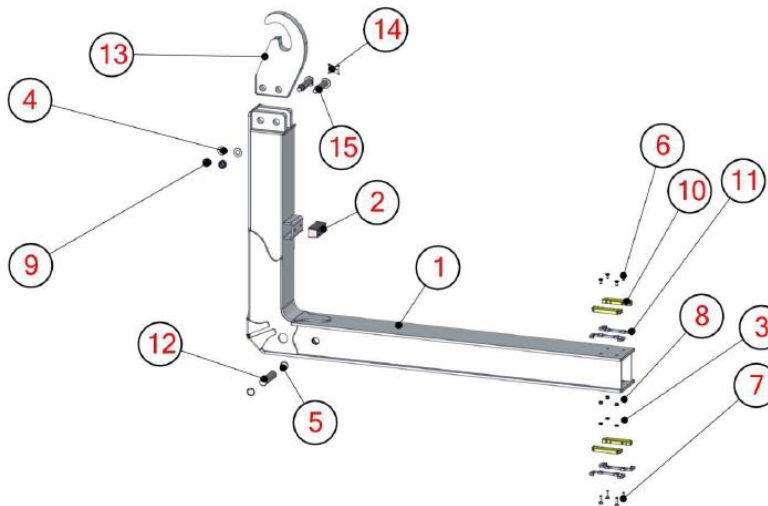
Registered office as above. Registered in England No. 2168135. VAT Reg. No. 475 4892 00

Spare Parts Identification

Parts denomination diagram for HH26 model



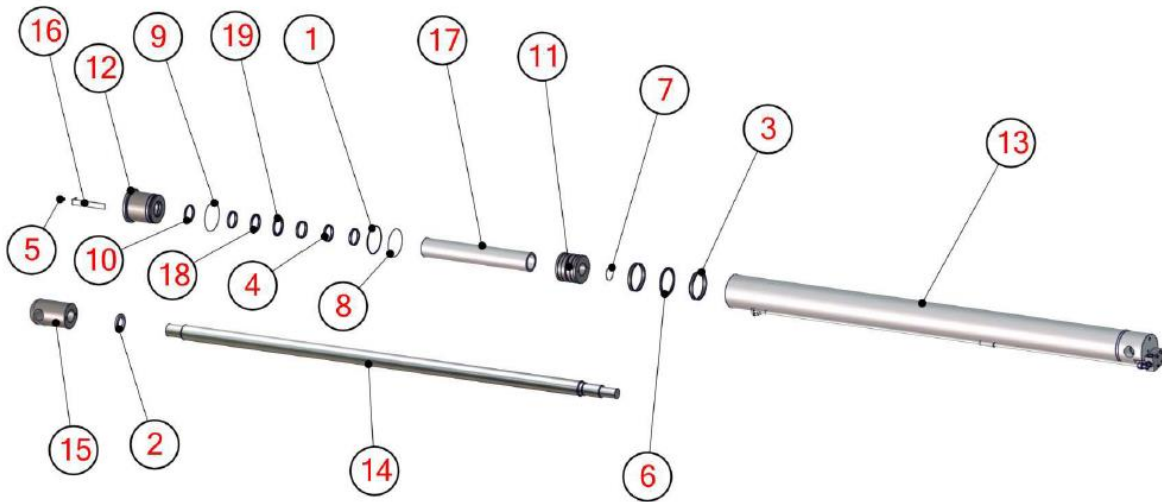
ID	DESCRIPTION	ID	DESCRIPTION	ID	DESCRIPTION
1	CENTRAL BODY	8	HOISTING CYLINDERS CROSS MEMBER	15	COUNTER HOOKS
2	SLIDING ARM	9	ROTATION CENTRE	16	HEAD STOCK
3	REARFRAME	10	SLIDING CYLINDER	17	FORKS
4	HOOK	11	HOISTING CYLINDERS	18	FLOW CONTROL
5	CONTAINER GUIDE ROLLERS	12	CONTAINER GUIDES	19	FRONTAL OIL TANK
6	CONTAINER LOCKING	13	RUBBER STOPPER	20	INTERLOCK 2 WAYS
7	REARFRAME	14	CONT. GUIDE ROLLERS	21	INTERLOCK 3 WAYS



ID BOM	Code	Qty
1	SIT20SF007	1
2	35.0027	1
3	DIN 6798-A13	4
4	DIN125 B27	2
5	DIN472 45x1.75	2
6	DIN7991 M12x25	4

ID BOM	Code	Qty
7	ISO10642 M12x45	4
8	ISO4032 M12	4
9	ISO7040 M27	2
10	SCM0192	4
11	SCM0195	4
12	SCM0250	1

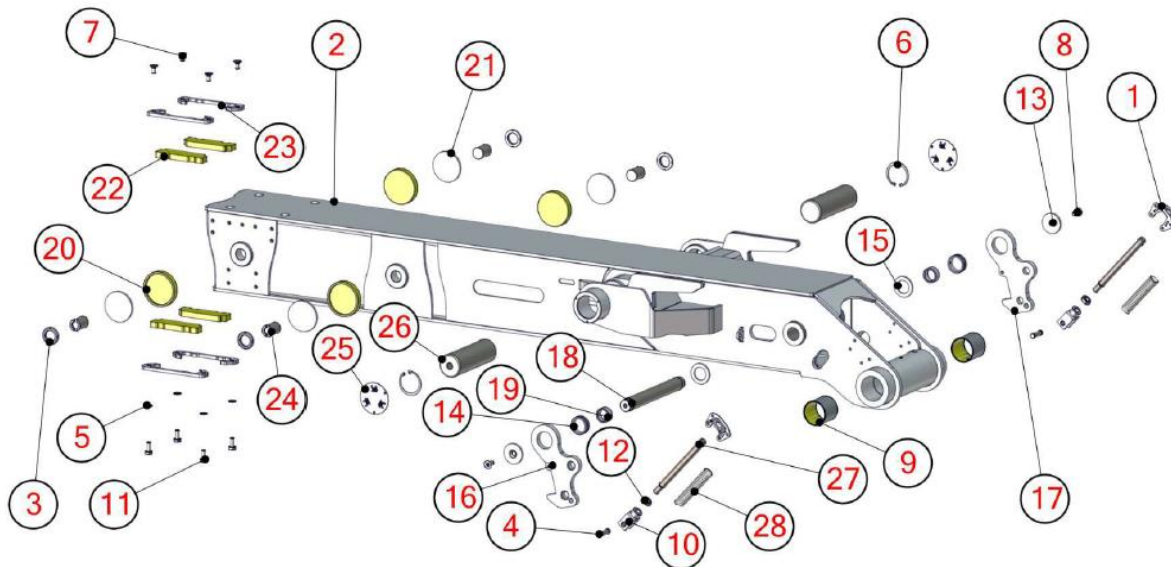
ID BOM	Code	Qty
13	SGIT26CH1	1
14	SIT20SF20	1
15	SSF26UMP6	2



ID BOM	Code	Qty
1	AP 243	1
2	GH50X2	1
3	GRF 105 110 15	2
4	GRF 60 65 9.7	4
5	ISO4016 M10x16	1
6	KPD 110 94.5 6.3	1
7	O-RING 226	1

ID BOM	Code	Qty
8	O-RING 243	1
9	O-RING 244	1
10	SA 60	1
11	SCI00055	1
12	SCI00059	1
13	SCI00060	1
14	SCI00094	1

ID BOM	Code	Qty
15	SCI00144	1
16	SCI00161	1
17	SCI00197	1
18	SD 60 70 7	1
19	XB 60 75.1 6.3	1

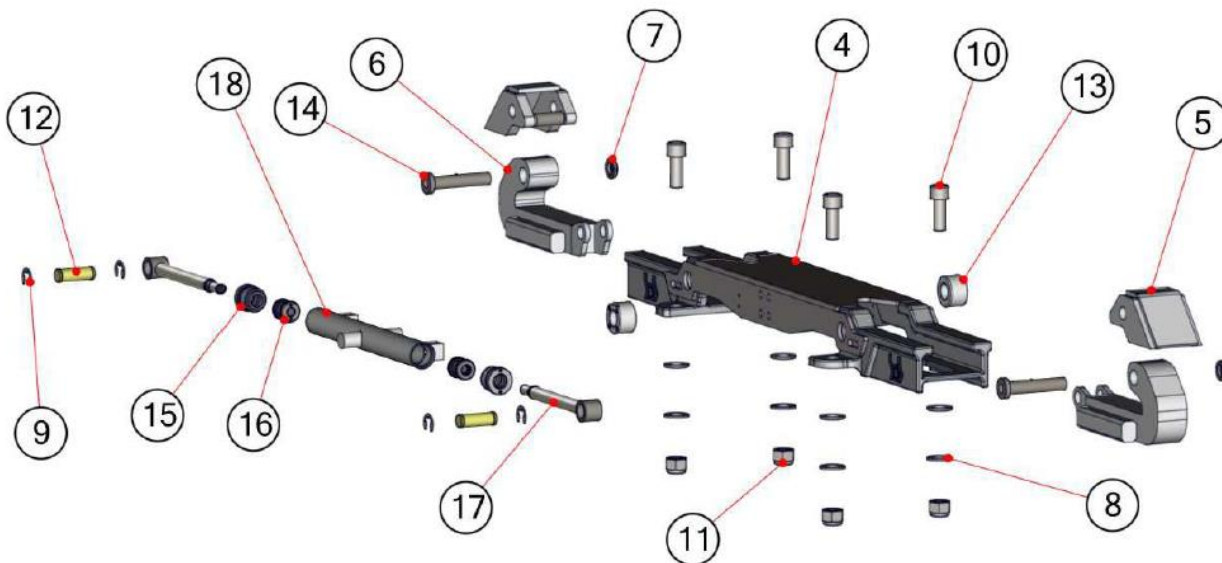
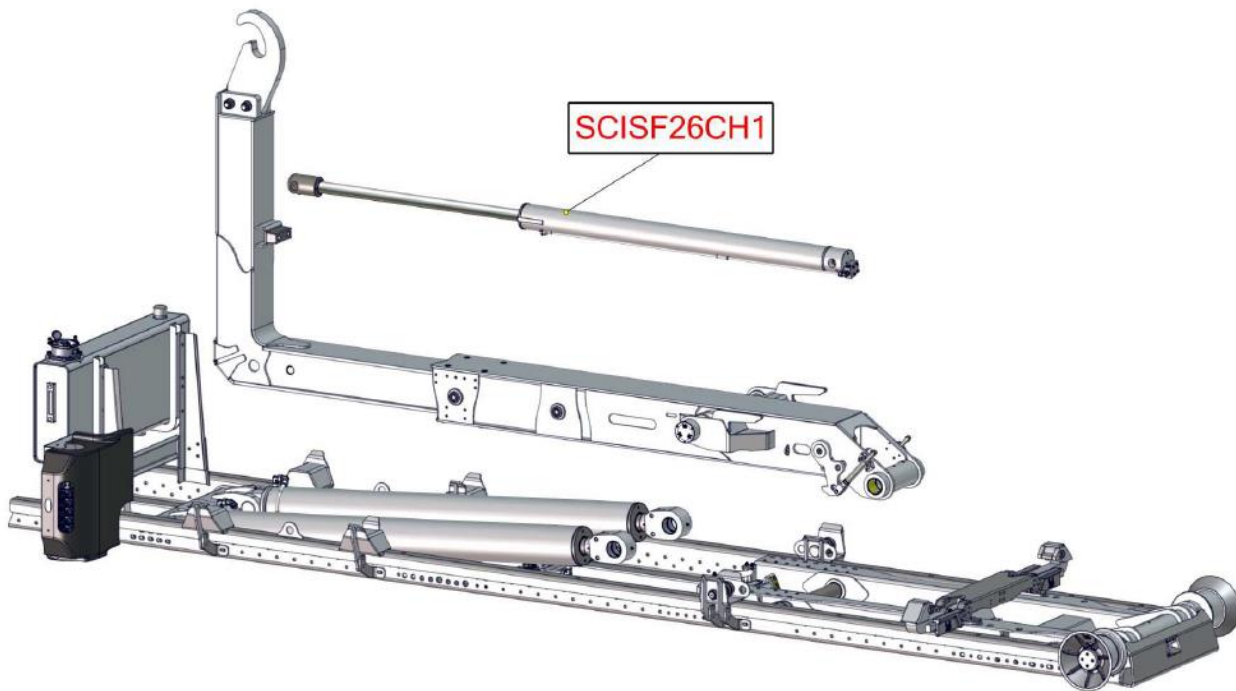


ID BOM	Code	Qty
1	SCM00027	2
2	SIT20CC7006	1
3	23146	4
4	3180101757	2
5	DIN 6798-A15	4
6	DIN472 80x2.5	2
7	DIN7991 M14x25	4
8	DIN7991 M14x30	2

ID BOM	Code	Qty
9	EKX 80 80	2
10	FFF12404	2
11	ISO4016 M14x30	4
12	ISO8675 M20x1.5	2
13	SCC12025	2
14	SCC26UM35A	2
15	SCC26UM61-6	2
16	SCM0095	1

ID BOM	Code	Qty
17	SCM0096	1
18	SCM0107	1
19	SCM0108	2
20	SCM0190	4
21	SCM0191	4
22	SCM0192	4
23	SCM0194	4
24	SCM0278	4

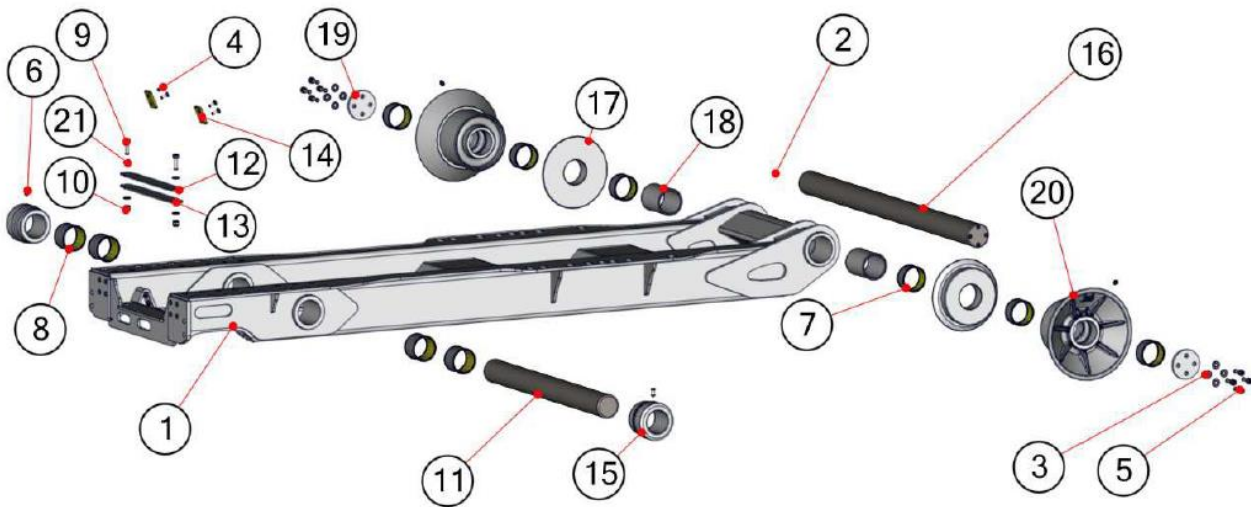
ID BOM	Code	Qty
25	SDFP0001A	2
26	SIT20CC20	2
27	SL3CCT59	2
28	SLTMC02	2



ID BOM	Code	Qty
4	SBENIT05	1
5	SBITD0001	2
6	SBL26CH001	2
7	23610	2
8	DIN125 B25	8
9	DIN6799 19	4

ID BOM	Code	Qty
10	DIN912 M24x60	4
11	ISO7040 M24	4
12	SBEIT012	2
13	SBENIT02	2
14	SBITD011	2
15	SCI00001	2

ID BOM	Code	Qty
16	SCI00002	2
17	SCI00004	2
18	SCI00198	1

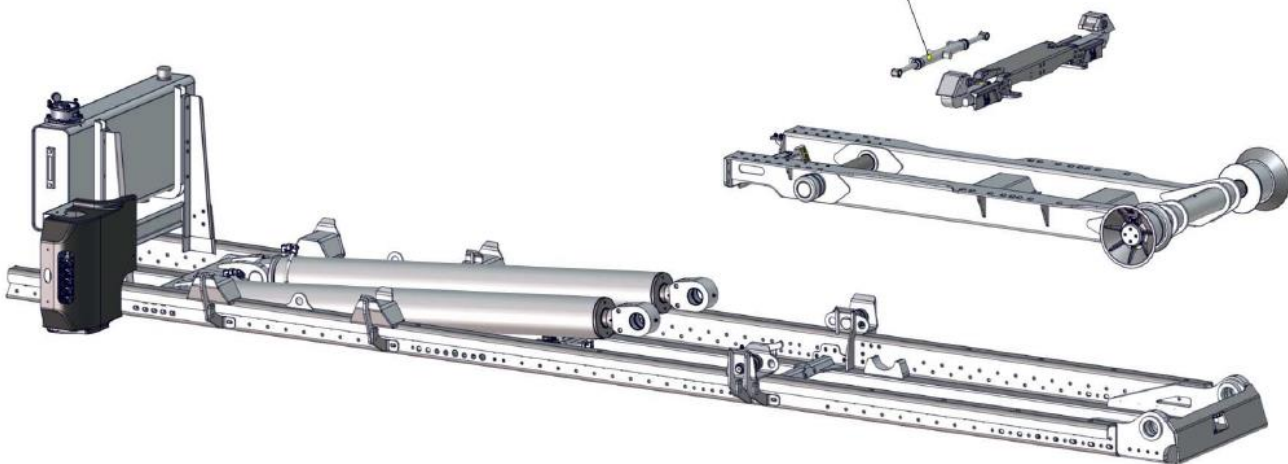


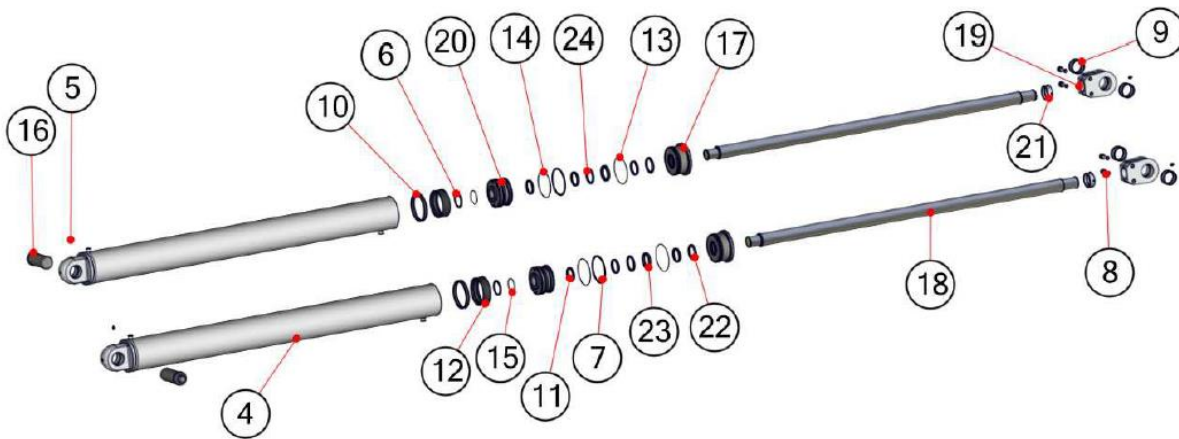
ID BOM	Code	Qty
1	STL260001	1
2	0510100101	3
3	DIN125 B 13	8
4	DIN7991 M8x25	4
5	DIN912 M12x35	8
6	DIN914 M12x25	2
7	EKX 80 40	6
8	EKX 80 60	4

ID BOM	Code	Qty
9	ISO4016 M12x40	2
10	ISO7040 M12	2
11	SCC26UMP2	1
12	SCM0016	1
13	SCM0017	1
14	SCM0031	2
15	SCM0039	2
16	SCT11505	1

ID BOM	Code	Qty
17	SCT11506	2
18	STN26UBB1	2
19	STT26MP1B/SA	2
20	T002	2
21	Washer DIN125 B 13	4

SCIBEST002

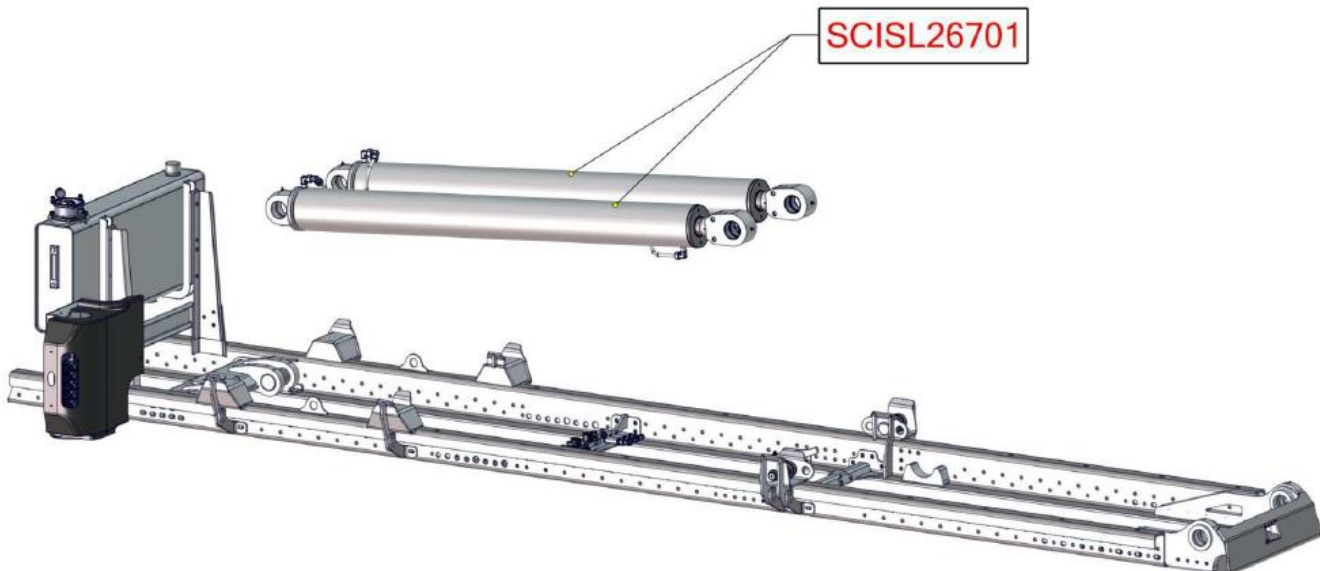


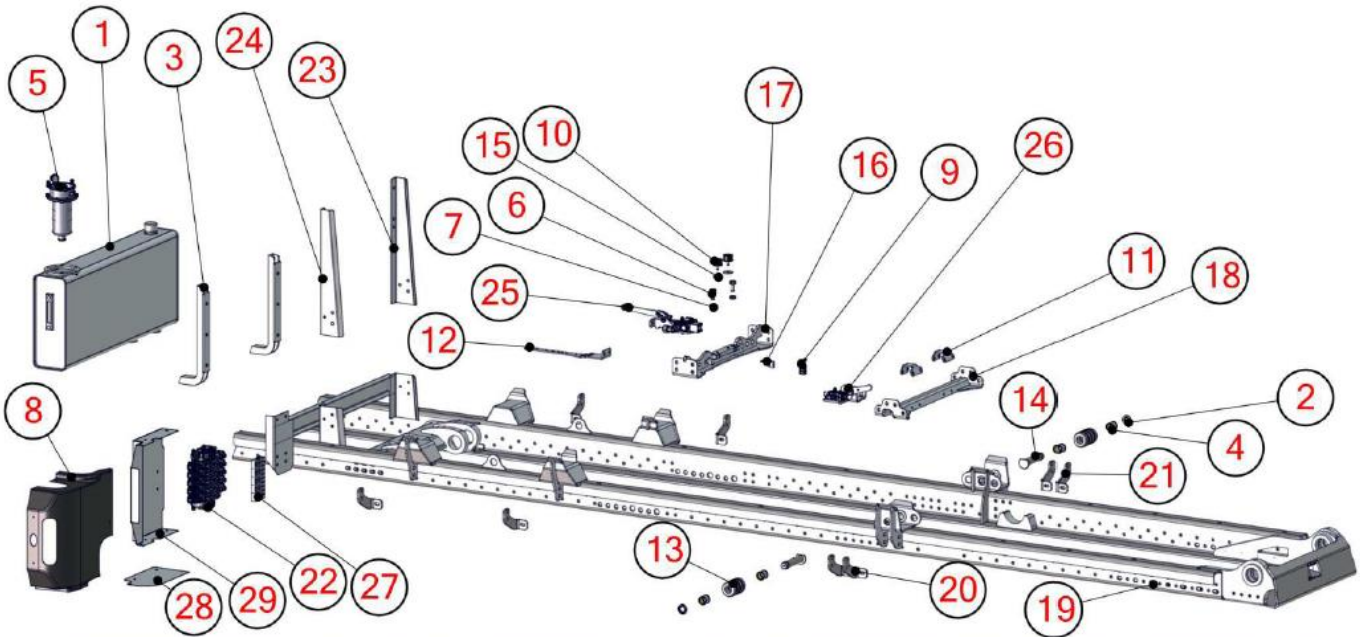


ID BOM	Code	Qty
4	SCISL267C1	2
5	0510100101	4
6	AP 338-620	2
7	AP 362	2
8	DIN912 M20x60	4
9	EKU 80 40	4
10	FE 170	2
11	GRF 80 85 9.7	6

ID BOM	Code	Qty
12	KGD 170 145	2
13	O-RING 260	2
14	O-RING 362	2
15	O-RING 620	2
16	SCC26UMP3	2
17	SCI00171	2
18	SCI00172	2
19	SCI00218	2

ID BOM	Code	Qty
20	SCI00225	2
21	SCI00246	2
22	SWP8095	2
23	UP 80 95 12	2
24	XB 80 95.1 6.3	2





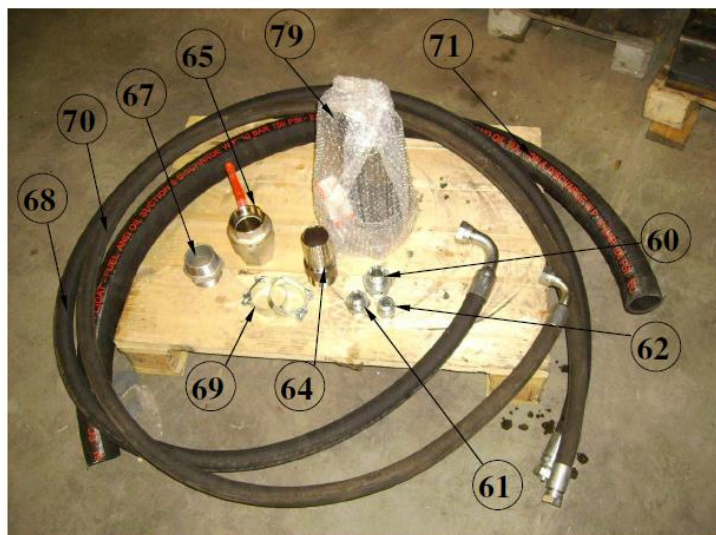
ID BOM	Code	Qty
1	0201140	1
2	23614	2
3	9S0201140	2
4	EKX 40 40	4
5	HHR20406	1
6	ISO4016 M20x40	2
7	ISO4035 M20	2
8	N01	1

ID BOM	Code	Qty
9	NF B112KD-DN3	1
10	P 50 30	2
11	SCM0015	2
12	SCM0217	1
13	SCM0245	2
14	SCM0246	2
15	SCM0259	2
16	SCM0260	1

ID BOM	Code	Qty
17	SCT000036	1
18	SCT000037	1
19	SCT000044	1
20	SCT00143	4
21	SCT00145	4
22	SDS150-4	1
23	SFSDS003SD	1
24	SFSDS003SS	1

ID BOM	Code	Qty
25	SINT0021-7	1
26	SINT0023	1
27	SP778053520	1
28	VAOFF268	1
29	VAOFF269	1

Front Oil Tank



82

Harsh Limited
The Industrial Estate, Full Sutton, York, YO41 1HS
Tel: 01759 372100 Fax: 01759 371414
email: harsh@harshuk.com



FM 13737

HARSH[®]
www.harshuk.com

Registered office as above. Registered in England No. 2168135. VAT Reg. No. 475 4892 00

Harsh Limited
The Industrial Estate, Full Sutton, York, YO41 1HS
Tel: 01759 372100 Fax: 01759 371414
email: harsh@harshuk.com

MAINTENANCE



service



FM 13737

HARSH[®]
www.harshuk.com

Registered office as above. Registered in England No. 2168135. VAT Reg. No. 475 4892 00

Maintenance should be carried out by trained professionals only and all health and safety checks listed in this manual along with site health and safety processes should be adhered to at all times. It is imperative before works are carried out on the Hooklift equipment safe and the environment is secure.

Routine Maintenance

Routine maintenance should be carried out by a trained competent professional and adhere strictly to all health and safety procedures and risk assessments.

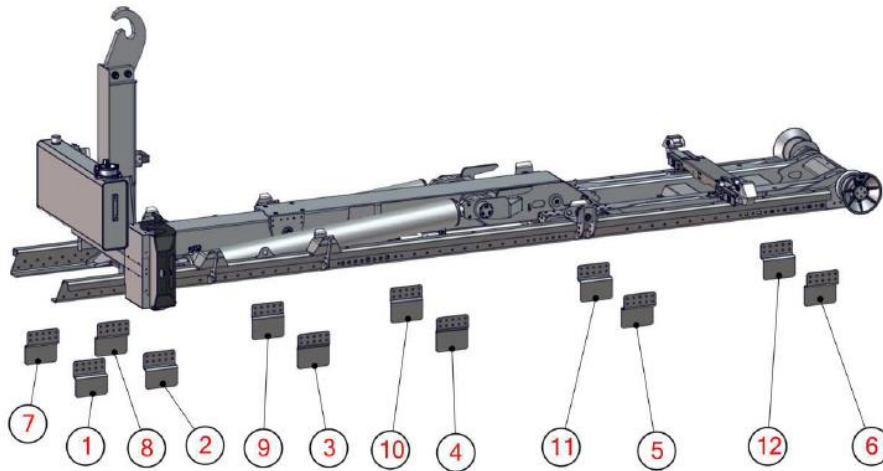
The routine maintenance guide provided is calculated for a single person in a standard workshop for the entire maintenance cycle. It is anticipated the total time to carry out the routine maintenance listed should be between 60-90 minutes.

What to check for on Routine Maintenance

This section provides a helpful guide on the items to check when maintaining the HH26 Hookloader equipment.

Chassis to Hooklift connecting/mounting plates

After the first 30-40 working hours perform a complete check on the fixation plates, bolts and nuts with specific attention to the front cylinders cross member connection plate.

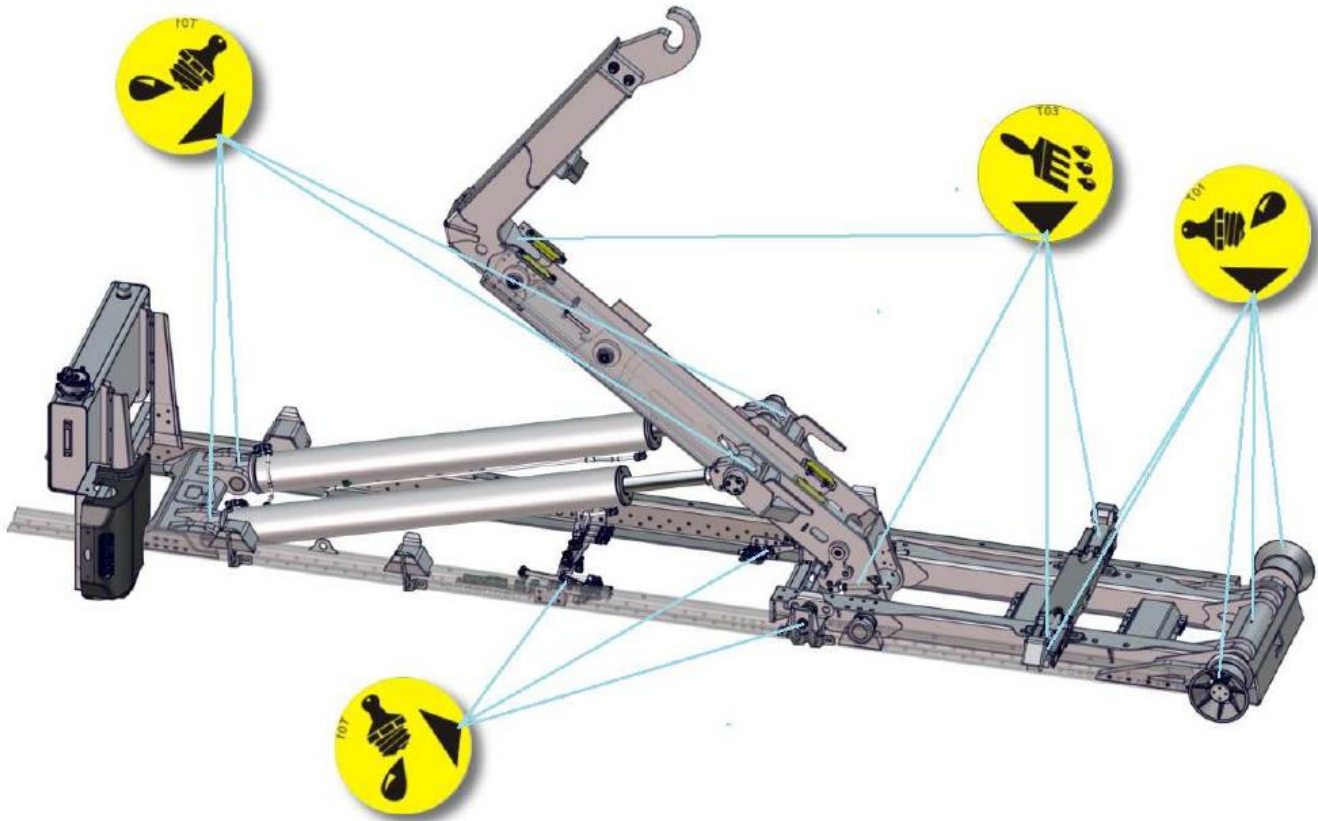


ID	POSITION	MATERIAL	BOLTS	TORQUE
1	Start underframe	S355-ST52	Min. No.5 M14x50 Class 10.9	198 Nm
2	Cross member attachment hoisting cylinder	S355-ST52	Min. No.5 M14x50 Class 10.9	198 Nm
3	Cross member support central body	S355-ST52	Min. No.5 M14x50 Class 10.9	198 Nm
4	Central underframe	S355-ST52	Min. No.5 M14x50 Class 10.9	198 Nm
5	Rotation center	S355-ST52	Min. No.5 M14x50 Class 10.9	198 Nm
6	End underframe	S355-ST52	Min. No.5 M14x50 Class 10.9	198 Nm
7	Start underframe	S355-ST52	Min. No.5 M14x50 Class 10.9	198 Nm
8	Cross member attachment hoisting cylinder	S355-ST52	Min. No.5 M14x50 Class 10.9	198 Nm
9	Cross member support central body	S355-ST52	Min. No.5 M14x50 Class 10.9	198 Nm
10	Central underframe	S355-ST52	Min. No.5 M14x50 Class 10.9	198 Nm
11	Rotation center	S355-ST52	Min. No.5 M14x50 Class 10.9	198 Nm
12	End underframe	S355-ST52	Min. No.5 M14x50 Class 10.9	198 Nm

Required time 10-15 minutes.

Greasing

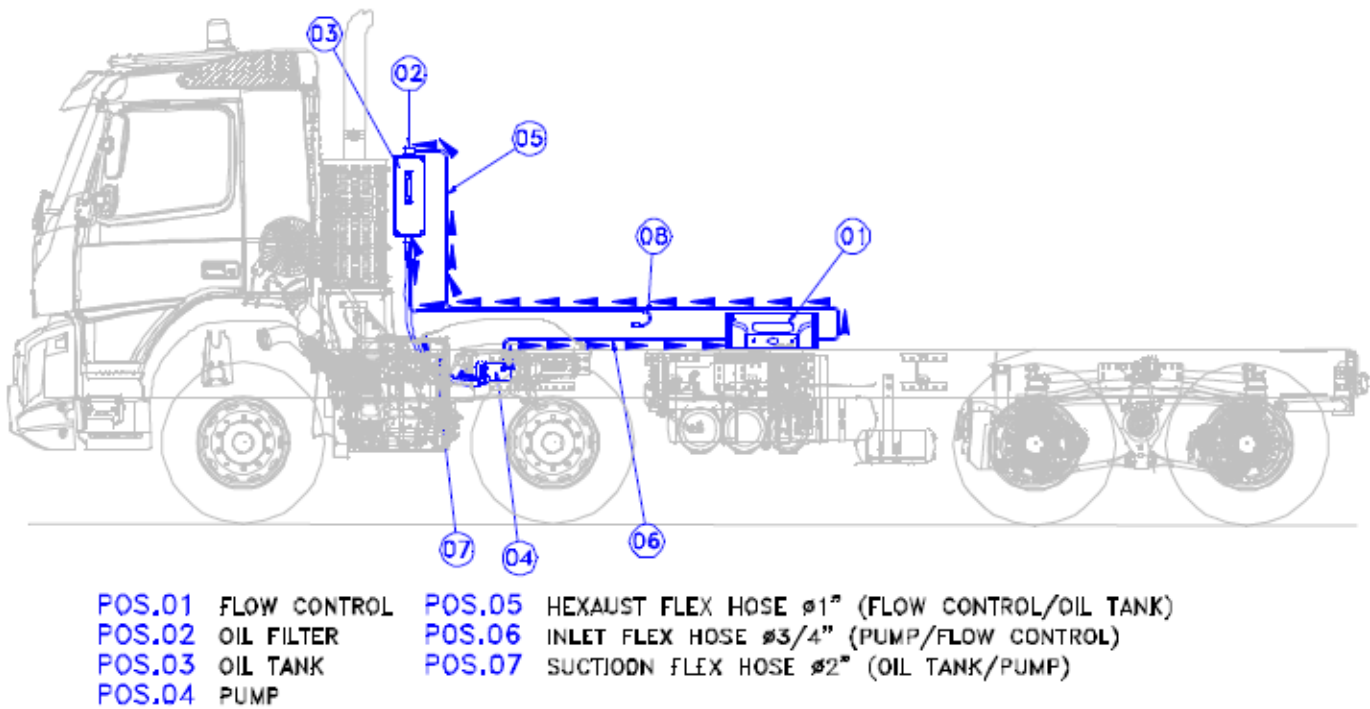
Every 60 hours of operating time, and not longer than every 3 months, perform complete equipment washing and greasing. Remember to grease; sliding pads, rotation half moons, interlock, mechanical safety lock spring hooks, hook security, hydraulic locking sliding jaws and rear rollers.



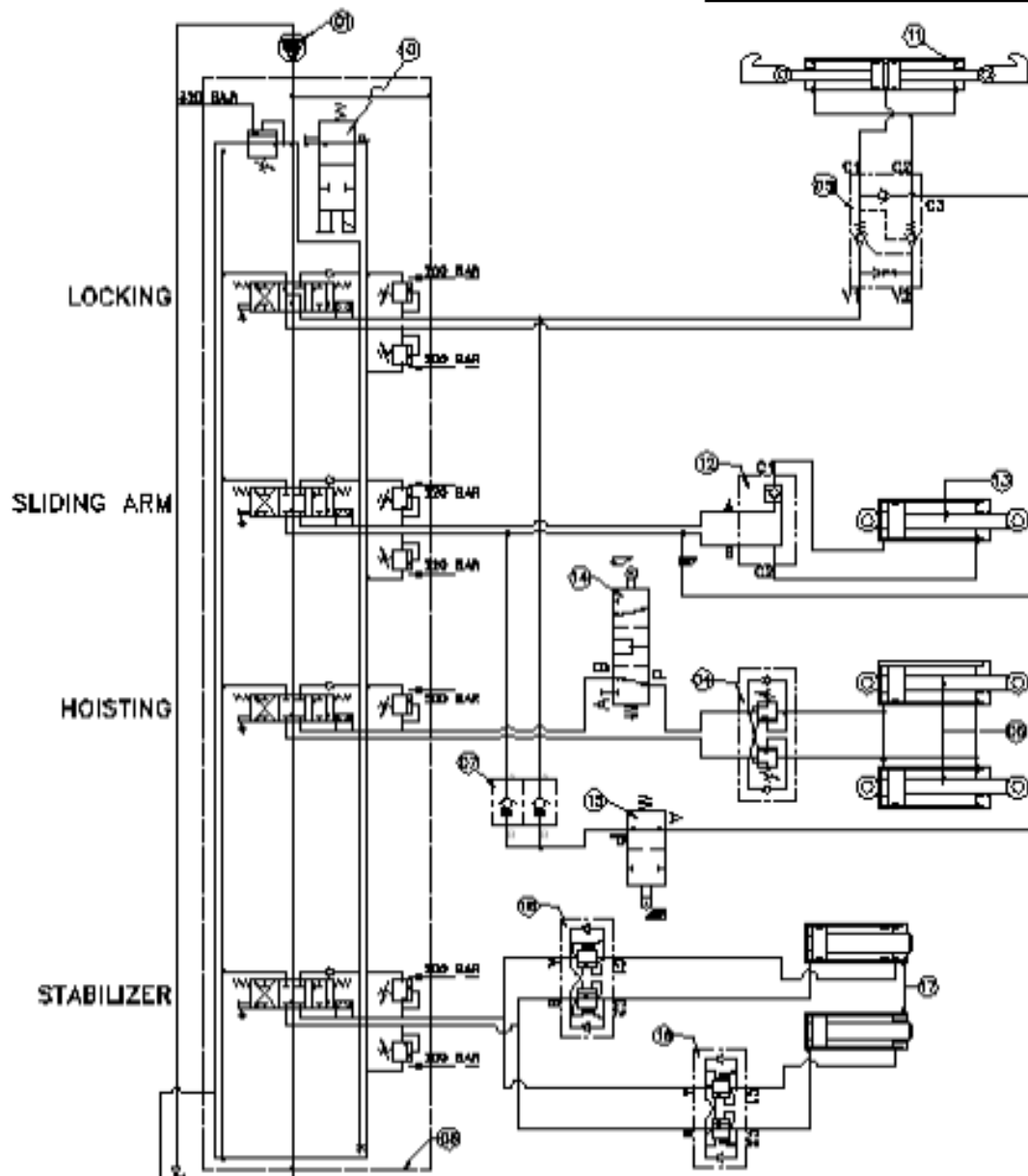
Required time 15 minutes

Hydraulic Circuit

Every 60 hours of operating time, and not longer than 3 months, check carefully the hydraulic circuit, flexible hoses and joints, flow control, suction hose, inlet high pressure hose and exhaust hose to verify hydraulic circuit component conditions, leaking or oil sweating. Consult the Oleo- dynamic system control diagram for info on the hydraulic circuit.



Required time 10 minutes



N°	DESCRIPTION	CODE
01	PUMP	---
02	FILTER	---
03	FLOWCONTROL	SDS150/4
04	BLOCK VALVE	A0704011200
05	PILOTAVE VALVE	B0503560100
06	HOISTING CYLINDERS	Q70695MA7180
07	CHECK VALVE	A1204000100
10	ELECTROVALVE	5CAR410311
11	LOCKING CYLINDER	SCIBEST001
12	BLOCK VALVE	A0503050200
13	SLIDING CYLINDER	124080032
14	INTERLOCK VALVE 3 WAYS	124050035
15	INTERLOCK VALVE 2 WAYS	122014050
16	STABILIZER VALVE	
17	STABILIZER CYLINDERS	

Rear Axle Jacks Stabilizer function – optional

Pressure Gauge

Check pressure settings by a pressure gauge on the flow control on the inlet headstock. This should be between 280-300 bar.

The bin locks should be pressure tested at the same place. This should be 220-250 bar.

The stabilizer jacks (optional extra) should be pressure tested at the same place. This should be 220-250 bar.

Required time 5 minutes

Hooklift Control Sequences

Check the hydraulic circuit controls by performing opening and closing each hydraulic function from the cab control as well as any ground control levers or remote controls.

Required time 5 minutes

Cylinders

During loading and unloading operations check carefully the cylinder rods chromium plating condition and the seals condition, remove any dirt and dust from the cylinder protection ring.

Require time 5 minutes

Hydraulic Oil

Every 150 hours check and clean or change the oil filter cartridge. During this operation check carefully the quality of the oil and level. Adjusting the level if necessary.

Required time 10 minutes

Structural Controls

Every 3 months perform a complete careful structure control, checking welding on the Hooklift components with particular attention to the stress connections: cylinder cross members, rotation centre, rear headstock, hook bolts and nuts, hydraulic locking bolted supports.

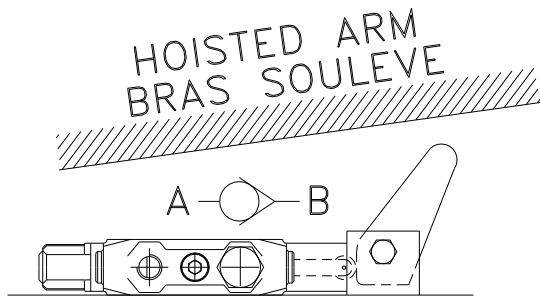
Required time 15 minutes

Electrical Circuit

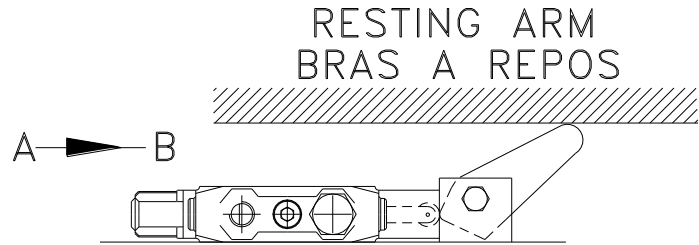
Hydraulic locking: perform hydraulic locking open / close and check the proximity switch fastening nuts. Verify that the locking warning light shows the non locked position (red LED). PTO Cab warning light: perform engage / disengage of the PTO switch positioned on the cab control board to verify the warning light function.

Required time 5 minutes

Hydraulic Safety Devices

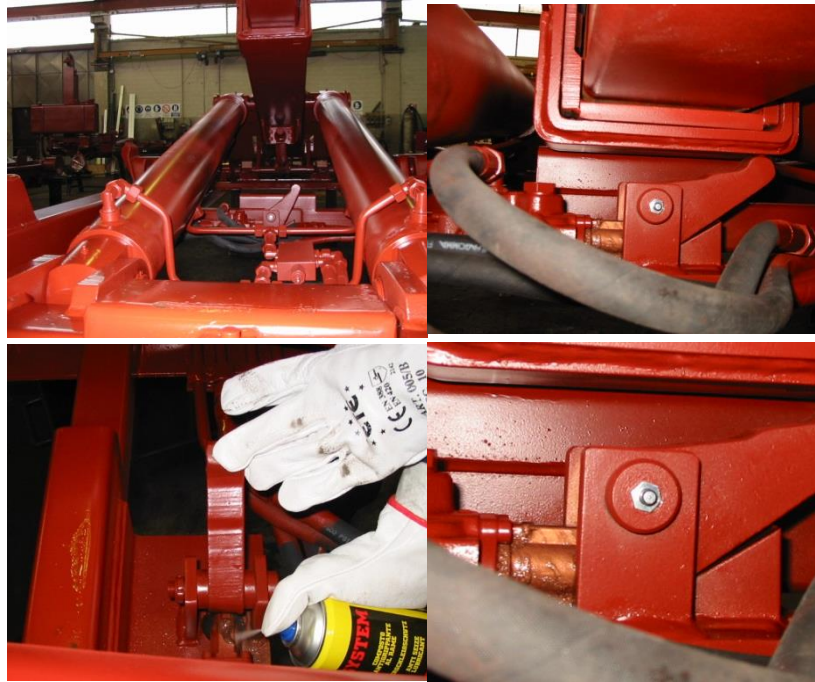


Interlock Valve close position container hydraulic
Locking non active



Interlock valve open position container
hydraulic locking activated

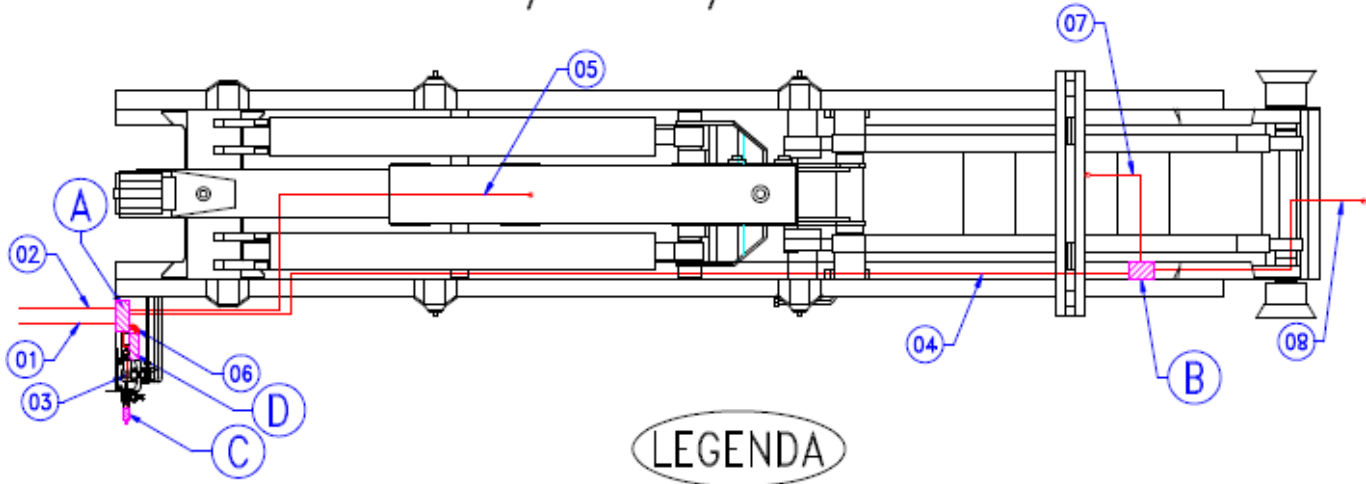
Check weekly the interlock valve, lubricating periodically the spring wheel cursor s pictured below.



Required time 10 minutes

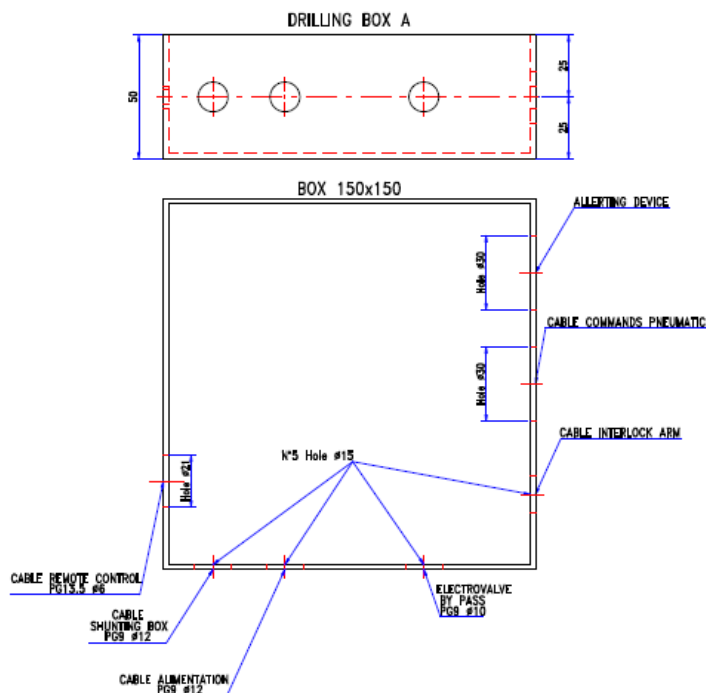
Standard Electropneumatic Installation

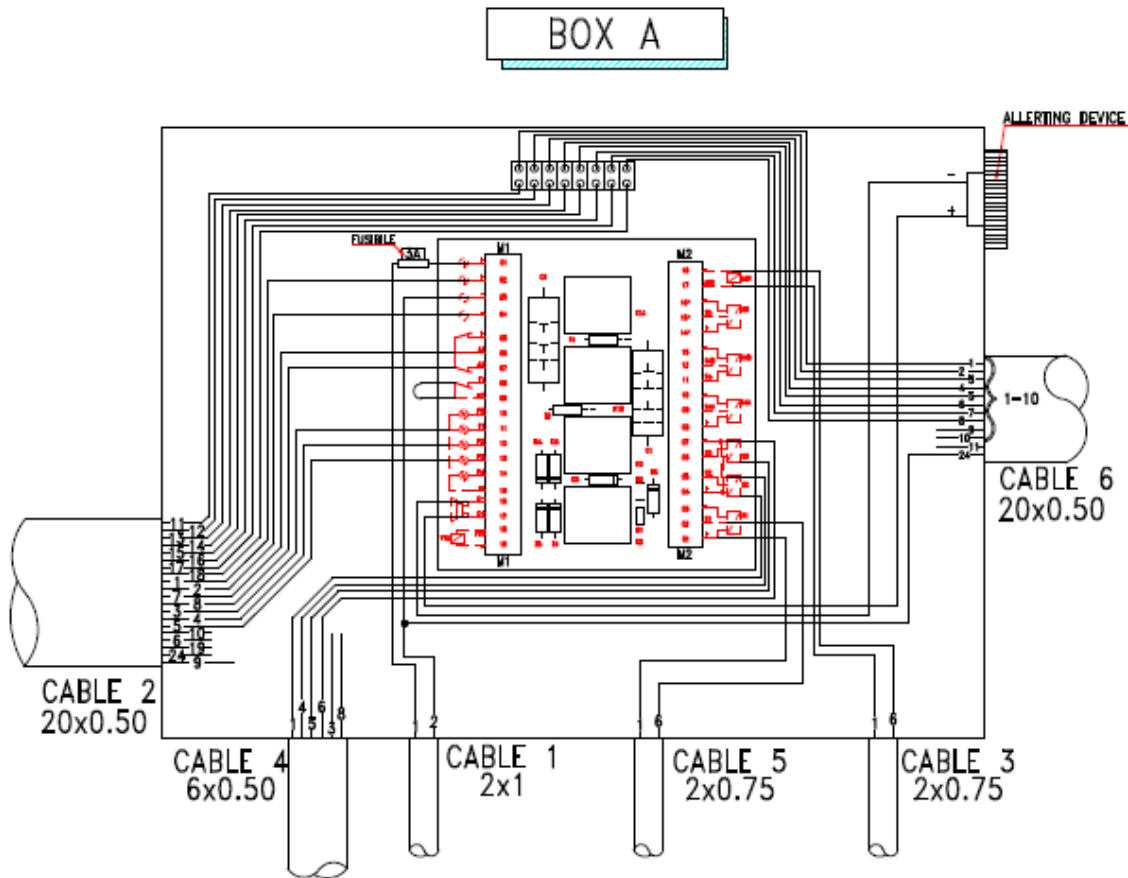
Electric system layout N° KEP-04-04-E-PSS1



LEGENDA

- | | |
|---|---|
| ① Cable alimentation | Ⓐ Card electrical box |
| ② Cable remote control | Ⓑ Shunting box |
| ③ Cable derivation box C - box A (Electrovalve) | Ⓒ Electrovalve |
| ④ Cable derivation box B - box A | Ⓓ Blocking pneumatic kuhnke (SP778053520) |
| ⑤ Cable sensor arm interlock | |
| ⑥ Cable blocking pneumatic kuhnke | |
| ⑦ Cable locking pressostat | |
| ⑧ Cable sensor stabilizer | |





CABLE 2 20x0.50		
FILO	COLORE	DESCRIZIONE
1	MARRONE	POSITIVE
2	BLUE	NEGATIVE
11	GRAY-PINK	SIGNAL
12	GRAY-MARRON	SIGNAL
13	GREEN-MARRON	SIGNAL
14	RED-BLUE	SIGNAL
15	YELLOW-MARRON	SIGNAL
16	WHITE-GRAY	SIGNAL
17	WHITE-GREEN	SIGNAL
18	WHITE-YELLOW	SIGNAL
3	GREEN	SIGNAL ARM
4	PINK	SIGNAL LOCKING
5	GRAY	SIGNAL STABILIZER
8	YELLOW	STOP
7	VIOLET	START
9	BLACK	---
10	RED	---
6	WHITE	---
19	WHITE-BLUE	---
24	PINK-MARRON	---

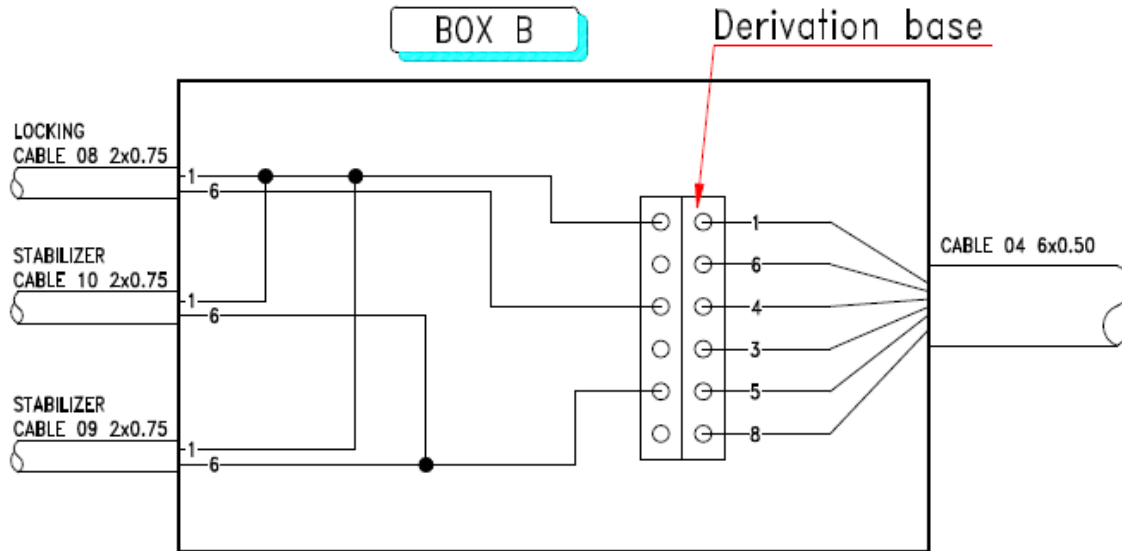
CABLE 06		
WIRE	COLOUR	DESCRIPTION
1	BLACK	SIGNAL MOVIMENT
2	BLACK	SIGNAL MOVIMENT
3	BLACK	SIGNAL MOVIMENT
4	BLACK	SIGNAL MOVIMENT
5	BLACK	SIGNAL MOVIMENT
6	BLACK	SIGNAL MOVIMENT
7	BLACK	SIGNAL MOVIMENT
8	BLACK	SIGNAL MOVIMENT
9	BLACK	---
10	BLACK	---
24	YELLOW-GREEN	NEGATIVE

CABLE 4 6x0.50 (SHUNTING BOX)		
FILO	COLORE	DESCRIZIONE
1	MARRON	POSITIVE
6	WHITE	NEGATIVE
4	PINK	SIGNAL LOCKING
3	GREEN	---
5	GRAY	SIGNAL STAB.
8	YELLOW	---

CABLE 1 2x1 (ALIMENTATION)		
FILO	COLORE	DESCRIZIONE
1	MARRON	POSITIVE FOR KEY +15
2	BLUE	NEGATIVE

CABLE 5 2x0.75 (DOUBLE SPEED)		
FILO	COLORE	DESCRIZIONE
1	MARRON	POSITIVE
6	WHITE	NEGATIVE

CABLE 3 2x0.75 (ELECTROVALVE)		
FILO	COLORE	DESCRIZIONE
1	MARRON	POSITIVE
6	WHITE	NEGATIVE

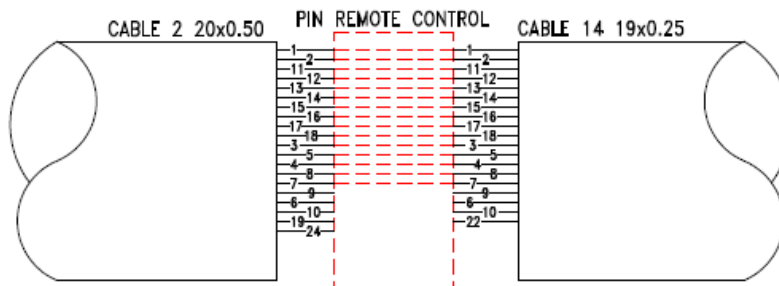


CABLE 08 2x0.75 BLOCCO		
WIRE	COLOR	DESCRIPTION
1	MARRON	POSITIVE
6	WHITE	SIGNAL LOCKING

CABLE 10 2x0.75 STAB.		
WIRE	COLOR	DESCRIPTION
1	MARRON	POSITIVE
6	WHITE	SIGNAL STABILIZER

CABLE 09 2x0.75 STAB.		
WIRE	COLOR	DESCRIPTION
1	MARRON	POSITIVE
6	WHITE	SIGNAL STABILIZER

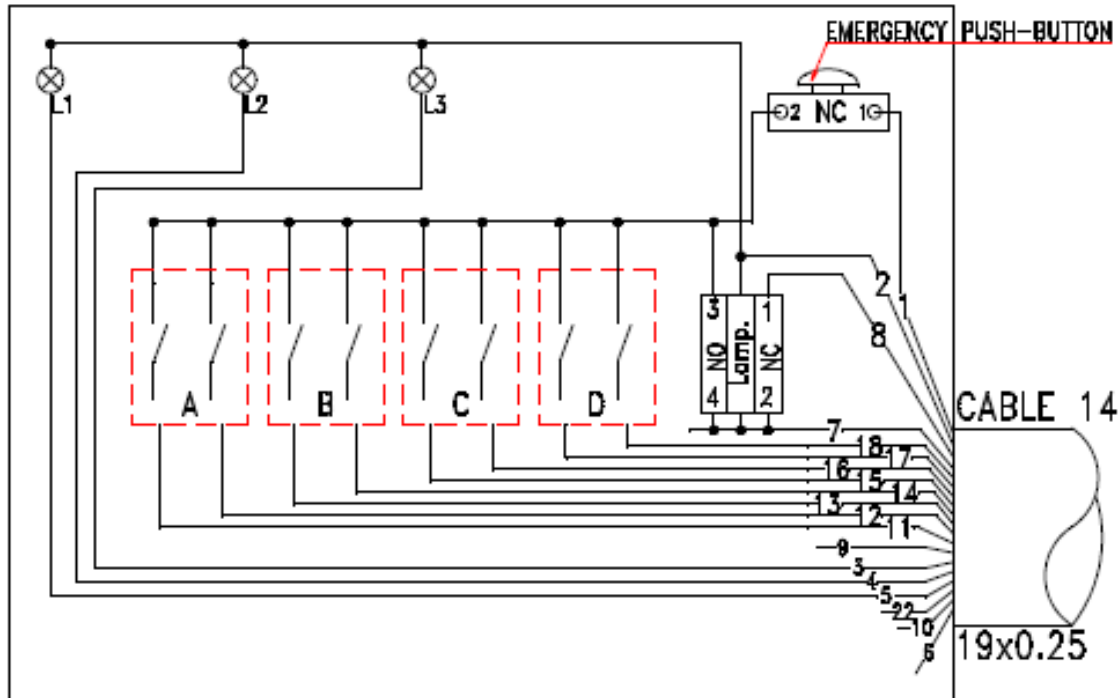
CABLE 04 6x0.50		
WIRE	COLOR	DESCRIPTION
1	MARRON	POSITIVE
6	WHITE	NEGATIVE
4	PINK	SIGNAL LOCKING
3	GREEN	---
5	GRAY	SIGNAL STABILIZER
8	YELLOW	---



CABLE 2 20x0.50		
WIRE	COLOUR	DESCRIPTION
1	BROWN	POSITIVE
2	BLUE	NEGATIVE
11	GRAY-PINK	SIGNAL
12	GRAY-BROWN	SIGNAL
13	GREEN-BROWN	SIGNAL
14	RED-BLUE	SIGNAL
15	YELLOW-BROWN	SIGNAL
16	WHITE-GRAY	SIGNAL
17	BINACO-GREEN	SIGNAL
18	WHITE-YELLOW	SIGNAL
3	GREEN	SIGNAL INTERLOCK ARM
4	PINK	SIGNAL LOCKING
5	GRAY	SIGNAL STABILIZER
8	YELLOW	STOP
7	VIOLET	START
9	BLACK	---
6	WHITE	---
10	RED	---
19	BINACO-BLUE	---
24	PINK-BROWN	---

CABLE 14 19x0.25		
WIRE	COLOUR	DESCRIPTION
1	BROWN	POSITIVE
2	BLUE	NEGATIVE
11	GRAY-PINK	SIGNAL
12	GRAY-BROWN	SIGNAL
13	GREEN-BROWN	SIGNAL
14	RED-BLUE	SIGNAL
15	YELLOW-BROWN	SIGNAL
16	WHITE-GRAY	SIGNAL
17	BINACO-GREEN	SIGNAL
18	WHITE-YELLOW	SIGNAL
3	GREEN	SIGNAL INTERLOCK ARM
4	PINK	SIGNAL LOCKING
5	GRAY	SIGNAL STABILIZER
8	YELLOW	STOP
7	VIOLET	START
9	BLACK	---
6	WHITE	---
10	RED	---
22	BINACO-PINK	---

REMOTE CONTROL 4ELEMENT



LEGENDA

- A HOISTING
- B LOCKING
- C SUSPENSION STABILIZER
- D SLIDING ARM

Led1: Suspension stabilizer display
Led2: Locking display
Led3: Interlock arm display

CABLE 14 19x0.25		
WIRE	COLOUR	DESCRIPTION
1	BROWN	POSITIVE
2	BLUE	NEGATIVE
11	GRAY-PINK	SIGNAL
12	GRAY-BROWN	SIGNAL
13	GREEN-BROWN	SIGNAL
14	RED-BLUE	SIGNAL
15	YELLOW-BROWN	SIGNAL
16	WHITE-GRAY	SIGNAL
17	BINACO-GREEN	SIGNAL
18	WHITE-YELLOW	SIGNAL
3	GREEN	SIGNAL INTERLOCK ARM
4	PINK	SIGNAL LOCKING
5	GRAY	SIGNAL STABILIZER
8	YELLOW	STOP
7	VIOLET	START
9	BLACK	---
6	WHITE	---
10	RED	---
22	BINACO-PINK	---

10.4 Maintenance Reporting



FM 13737

HARSH®

www.harshuk.com

Registered office as above. Registered in England No. 2168135. VAT Reg. No. 475 4892 00

Fill in the report charts to record your routine maintenance check dates. Reference the checks carried out and any comments/issues found or rectified in the following reports. Ensure it is signed and verified by your line manager or another trained professional engineer.

MAINTENANCE REPORT

CUSTOMER _____ DATE _____

VEHICLE _____ REGISTRATION NO _____

VEHICLE LOCATION _____

EQUIPMENT

HOOKLIFT MODEL _____ SERIAL NO _____

JOB NO _____

COMMENTS

Hooklift Control Sequences Checks

Electric circuit and monitoring control sequence checks.

Sliding arm proximity check [] Comments _____

Hydraulic locking proximity check [] Comments _____

Stabilizing Roller proximity check [] Comments _____

Front hydraulic locking ADR [] Comments _____

PTO & Pump Visual Checks

Oil Leaking Check [] Comments _____

Condition of the Equipment Visual Check [] Comments _____



FM 13737

HARSH[®]
www.harshuk.com

High Pressure Pump Output [] Comments _____

Oil Tank Suction Hose [] Comments _____

Oil Tank & Filter Cartridge [] Comments _____

Oil Level Gauge [] Comments _____

Gate Valve [] Comments _____

Three Way Oil Switch [] Comments _____

Hydraulic Circuit Checks

Steel Pipes and Flex Hoses to

- Hoisting Cylinders [] Comments _____
- Telescopic Arm Cylinder [] Comments _____
- Hydraulic Locking Cylinder [] Comments _____
- Rear Stabilizer Cylinder [] Comments _____

Structural Control Checks

Hooklift Hook [] Comments _____

Bolts & Nuts Fastening [] Comments _____

Telescopic Arm [] Comments _____

Centre Body [] Comments _____

Half Moon Rotation Centre [] Comments _____

Rear Frame [] Comments _____

Hydraulic Locking [] Comments _____

Rear Stabilizer Roller (optional) [] Comments _____

Rear Headstock [] Comments _____

Fixation Plates [] Comments _____

Bolts & Nuts Fastening [] Comments _____



FM 13737

Harsh Limited
The Industrial Estate, Full Sutton, York, YO41 1HS
Tel: 01759 372100 Fax: 01759 371414
email: harsh@harshuk.com

Oil Tank Supports [] Comments _____

Oil Tank & Filter [] Comments _____

Container Guide [] Comments _____

ADDITIONAL COMMENTS

DATE _____ SIGNATURE _____



FM 13737

HARSH[®]
www.harshuk.com

Registered office as above. Registered in England No. 2168135. VAT Reg. No. 475 4892 00

Harsh Limited
The Industrial Estate, Full Sutton, York, YO41 1HS
Tel: 01759 372100 Fax: 01759 371414
email: harsh@harshuk.com

Routine Maintenance Record

[illegible]

FM 13737

HARSH®
www.harshuk.com

Registered office as above. Registered in England No. 2168135. VAT Reg. No. 475 4892 00

Harsh Limited
The Industrial Estate, Full Sutton, York, YO41 1HS
Tel: 01759 372100 Fax: 01759 371414
email: harsh@harshuk.com

HITS (Improved Tuck Support)

HITS



service



FM 13737

HARSH[®]
www.harshuk.com

Registered office as above. Registered in England No. 2168135. VAT Reg. No. 475 4892 00

Introduction

Harsh Ltd prides itself on being an industry leader in the products and the services we offer. We aim to provide products that give the operator added value in payback and profit generation. This core belief is at the very heart of Harsh from its foundation with the World's first stabilised Tipping Gear back in 1987. This unique product concept and design revolutionised the industry and changed the way in which the tipping sector treated safety. From that day forward Harsh has continued from its Yorkshire roots to improve and support the commercial vehicle sector by sourcing and designing industry leading products.

The introduction of the Sheeting System Division in 1996 saw the UK's first ever automated tarpaulin covers fitted on UK road going vehicles. The demount handling equipment introduced in 1999 saw Harsh design in house its own Skip and Hookloaders. Not satisfied with simply importing readymade continental versions, Harsh set about designing our very own demount bodies. With all the benefits needed to operate effectively in the UK. Working with manufacturing partners with a vast amount of experience we tailored the demount designs to UK specifications. This saw the launch of the Harsh T Range of Skiploaders and the Harsh Hooklift models.

This recipe of providing products with added value has underpinned the continued growth of Harsh from a small family company into a worldwide recognised brand in vehicle hydraulics and ancillary equipment. We currently export our products all over the world with notable joint ventures in New Zealand, Australia and South Africa.

It is however our expertise and knowledge of the UK market which has seen us recently launch our new HITS programme; focusing our attention on a more service led business support unit. HITS has grown from its initial inception in providing one large nationwide operator with a tailored service package, into a service package offered with all our products as standard.

What is HITS?

HITS stands for Harsh Improved Truck Support and is a tailor made service led package that helps support working trucks to ensure minimum repair and maintenance costs and ultimately reduce vehicle downtime.

How does HITS work?

Every one of our products is sold with a full Harsh warranty as per our standard terms and conditions of sale. HITS in its basic format is our way of extending full product service support beyond the initial sale. Whether in terms of a quick service response, warranty, parts on the shelf or friendly technical advice HITS has it covered. Simply telephone Harsh on 01759 372100 or Peter Arthur our Service Manager on 07984 412 717 – Available 24/7 HITS will have your queries dealt with quickly and efficiently.

We also go beyond the industry norm and carry out full inspections and reports on everyone one of our Service Jobs to enable you the customer to learn exactly what has happened with your vehicle. This also enables us to build a portfolio on each of your individual trucks, compare data and suggest areas for preventative maintenance checks. Working in a Service partnership with our customers really does provide added value on our products.



FM 13737

HARSH[®]
www.harshuk.com

Harsh Limited
The Industrial Estate, Full Sutton, York, YO41 1HS
Tel: 01759 372100 Fax: 01759 371414
email: harsh@harshuk.com

How does HITS offer nationwide support?

We have 2 fully stocked Service Vans based at our Full Sutton, York HQ available at a moment's notice to travel anywhere in the UK. Fully stocked with mobile equipment to carry out onsite repairs our service engineers are trained to get you moving again as fast as possible.

Requiring a faster response, we also have 1 small minivan for an even quicker service; often available as a gesture for courtesy hire if your truck requires back to factory support. This takes the logistical nightmare of a breakdown out of your hands immediately, whilst we deal with your repair quickly and efficiently.

We also have our very own Harsh tractor unit, which enables us to collect and deliver trailers. A further example of our investment in HITS and the importance we place on our Service Support.



Do you have a Service Engineer in my local Area?

Yes. We have a complete nationwide network of Dealers / Service engineers all fully trained and most complete with a range of stocked parts to keep you moving. Please see our Dealer List attached to this document for further details on your nearest engineer.

Ring Harsh on 01759 372100 or Phil Bovingdon our Service Manager on 07984 412789 and we will arrange for your nearest agent to be ready awaiting your arrival.

Do you have Parts off the Shelf?

HITS offers a complete range of spare parts available off the self-next day to anywhere in the UK. With over 35,000 vehicles equipped with Harsh equipment we send out on average 15 spare part items per day across our product ranges to help support Harsh products in the field. Using a guaranteed before Noon carrier we aim to have your parts packed and packaged inside an hour of your order. Delivered to you the next working day or Saturday AM if required.



Telephone our Spares Department on 01759 372100 for friendly helpful advice with product documentation and schematics to aid identification.



FM 13737

HARSH[®]
www.harshuk.com

Registered office as above. Registered in England No. 2168135. VAT Reg. No. 475 4892 00

Harsh Limited
The Industrial Estate, Full Sutton, York, YO41 1HS
Tel: 01759 372100 Fax: 01759 371414
email: harsh@harshuk.com

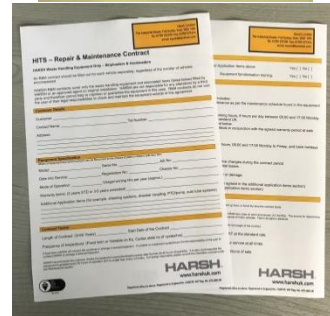
Do you offer Extended Terms or R&M Packages?

HITS can be if required further encompassing and include extended warranty options, full periodic service reports and onsite maintenance checks as well as fully stocked onsite parts outlets. For further details on these possibilities please speak with your Harsh representative to tailor design a package to suit your needs.

For example, we have numerous HITS packages which currently involve periodic fleet inspections using a traffic light reporting system for tippers or routine maintenance schedules for waste handling equipment. These reports are then fed back to you the customer and a programme is then agreed to ensure any potential VOR are dealt with prior to it occurring.

A preventative maintenance system that has dramatically reduced downtime and repair costs for numerous customers.

HITS has also been extended recently to cover other manufacturers products where possible to help with one easy point of contact.



Industry Accreditations

Harsh Ltd are ISO9001:2008 compliant credited by the British Standard Institute. Meaning we have full audited systems which give us full traceability and processes in place to ensure full support.

We are active members of the UK CHEM (Container Handling Equipment Manufacturers) committee set up to lobby government with regards to the best practises for the UK waste handling industry.

Harsh are also currently working towards ECWVTA (European Community Whole Vehicle Type Approval) legislation coming into play in October 2014.

After Sales Service & Customer Care – How do we compare?

In an independent survey, Harsh came out top on after sales service and customer care for the hydraulic industry in the UK. With note to our special attention to detail and our personal approach to customers. We are proud of this achievement and endeavour to provide honest, quick and simple answers to any of your questions or needs.



FM 13737

HARSH
www.harshuk.com

Registered office as above. Registered in England No. 2168135. VAT Reg. No. 475 4892 00

Harsh Limited
The Industrial Estate, Full Sutton, York, YO41 1HS
Tel: 01759 372100 Fax: 01759 371414
email: harsh@harshuk.com

Service Contact Details

Service Manager – Peter Arthur
Harsh Ltd
T. 01759 372 100
M. 07984 412 717
E. peter.arthur@harshuk.com

Aftersales Administration – Sharon Lazenby
Harsh Ltd
T. 1759 372100
E. Sharon.lazenby@harshuk.com

Spare Parts Department
Harsh Ltd
T. 01759 372100
E. harsh@harshuk.com

Workshop Manager – Phil Bovingdon
Harsh Ltd
T. 01759 372100
Mo. 07984 412 879
E. phil.bovingdon@harshuk.com

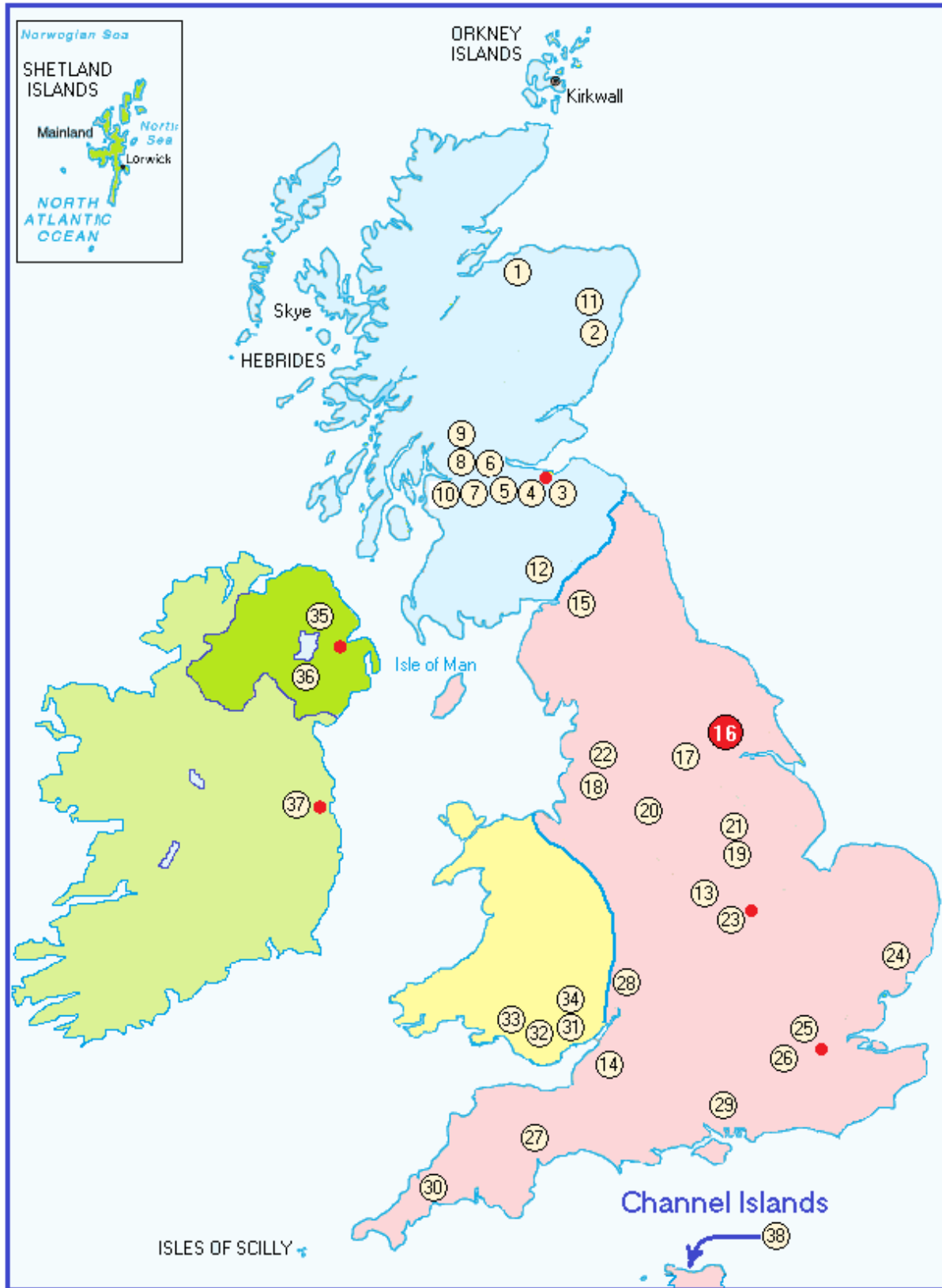


FM 13737

HARSH[®]
www.harshuk.com

Registered office as above. Registered in England No. 2168135. VAT Reg. No. 475 4892 00

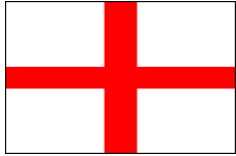
UK Dealer Network





SCOTLAND

Ref	Company	Location	Contact	Tel	Email
1	James Munro Engineering	Forres	James Munro	01309 672681	finoamunro641@btinternet.com
2	Gordon Nicol	Stonehaven	Gordon Nicol	07976 829874	gordienicol@live.com
3	Bulkweld Limited	Broxburn	Eddy Mollon	01506 811 453	eddy@bulkweld.com
4	Alex Inglis Scotland Ltd	Bellshill	David Smith	01698 823 213	David@alexinglis.co.uk
5	Outreach Ltd	Falkirk	Colin Mansen	01324 889000	cmansen@outreachltd.com
6	P M H Coachbuilders Ltd	Bonnybridge	Peter Hogan	01324 841702	pmhcoach@aol.com
7	Central Commercial Services	Bothwell	Barry Sweeney	07854 782 891	centralcommercialservices@hotmail.co.uk
8	DJS Engineering Ltd	Glasgow	Darren Johnson	07971 055278	djsscotland@me.com
9	J M Services	East Kilbride	Jim Mills	07786 710075	jm.services@live.co.uk
10	Thistle Hydraulics Ltd	Denny	Geoff Howells	01324 821 300	sales@thistlehydraulics.co.uk
11	W J Rattray	Inverurie	Bill Rattery	01467 631 345	wjrattray@hotmail.com
12	Carlton Engineering	Moffat	John Carlton	01683 220582	www.carlton-engineering.com



ENGLAND

Ref	Company	Location	Contact	Tel	Email
13	Chassis Development Services Ltd	Walsall	George Creegan	01922 410 990	george@chassisdevelopmentsservices.co.uk
14	GJC Commercials Ltd	Bristol	Richard	01179 644 411	info@gjccommercials.com
15	S J & K Holliday	Carlisle	Steve Holliday	01228 672 060	
16	Harsh Ltd	York	Peter Arthur	07984 412 717	Peter.arthur@harshuk.com
17	MTMS Ltd	Leeds	Matthew Tate	07714 274 129	
18	Hydraulic Spares Centre	Bolton	Michael Booth	01204 527 594	hydraulicsparescentre@live.com
19	Muldoon Transport Systems Ltd	Swadlincote	Richard Jones	012835 22 956	richardjones@muldoon.com
20	Nixon Vehicle Inspection	Congleton	Mark Nixon	07525 900 979	
21	Swadlincote Aluminium Company Ltd	Swadlincote	Rob Winfield	01283 223 323	
22	Thompson Spares & Service Ltd	Blackburn	Nathan Ewins	07765 863 379	nathanewins@thompsonshuk.com
23	Truckweld	Wisbech	Trevor Howlett	07957 165 337	info@truckweld.co.uk
24	Tip N Lift	Ipswich	Paul Cox	01473 747 222	paul@tipnlift.co.uk
25	KEL Services	Pinner	Paul Kelly	07769 723 045	
26	S&S Hydraulics	Staines	Stacy Burgoyne	07779 235 038	info@sandshydraulics.co.uk
27	Wains Transport	Cullompton	Bruce	01884 266 300	wainstransport@yahoo.co.uk
28	Fleetcare Services Vehicle Engineers Ltd	Ross on Wye	Rob Waters	01989 565 777	
29	H P Hydraulics	Fareham	Nigel Howes	01329 822 277	
30	Highway Commercials	St Austell	Viv Retallick	01726 682 70	highwaycommercialsupplies@hotmail.com



Wales

Ref	Company	Location	Contact	Tel	Email
31	KCS Transport Ltd	Barry	Ken Sievwright	01446 751 423	
32	Neath Coachbuilders	Neath	Paul Oakley	01639 643 629	paul.oakley@neathcoacbuilders.co.uk
33	Neath Coachbuilders	Swansea	Chris James	01792 781 660	Chris.james@neathcoacbuilders.co.uk
34	Tanner Electrics	Cardiff	Paul / Lee	02920 727 190	



Northern Ireland

Ref	Company	Location	Contact	Tel	Email
35	McErlean Trailers	Toomebridge	Martin McErlean	02879 659 959	mcerleantrailers@hotmail.co.uk
36	Muldoon Transport Systems Ltd	Dungannon	Justin Muldoon	07867 500 089	Justin@muldoon.com



Republic of Ireland

Ref	Company	Location	Contact	Tel	Email
37	Kieran Trehya Hydraulics	Dublin	Kieran Trehya	003531 8 644 915	



Channel Islands

Ref	Company	Location	Contact	Tel	Email
38	Rabeys Garage Ltd	Guernsey	Paul Bourgaize	01481 244 551	paul.bourgaize@rabeys.com